

## **Historic, Archive Document**

Do not assume content reflects current scientific knowledge, policies, or practices.



62.57

LIBRARY  
RECEIVED  
★ APR 10 1942 ★  
U. S. Department of Agriculture

# FORBES SEEDS

LAWN GRASS SEED—FERTILIZERS  
BULBS—PLANTS—INSECTICIDES  
CHRYSANTHEMUMS—PERENNIALS

Flower and Vegetable Seeds in Separate 52-page Catalog

**ALEXANDER FORBES & CO.**

SEEDSMEN • 487 Washington St., Newark, N. J.

Between Kinney St. and Clinton Avenue

*Easy Parking*

DISPLAY GARDEN AND FIELD STORE ON ROUTE 10, HANOVER, N. J.

*for*

1

9

4

2



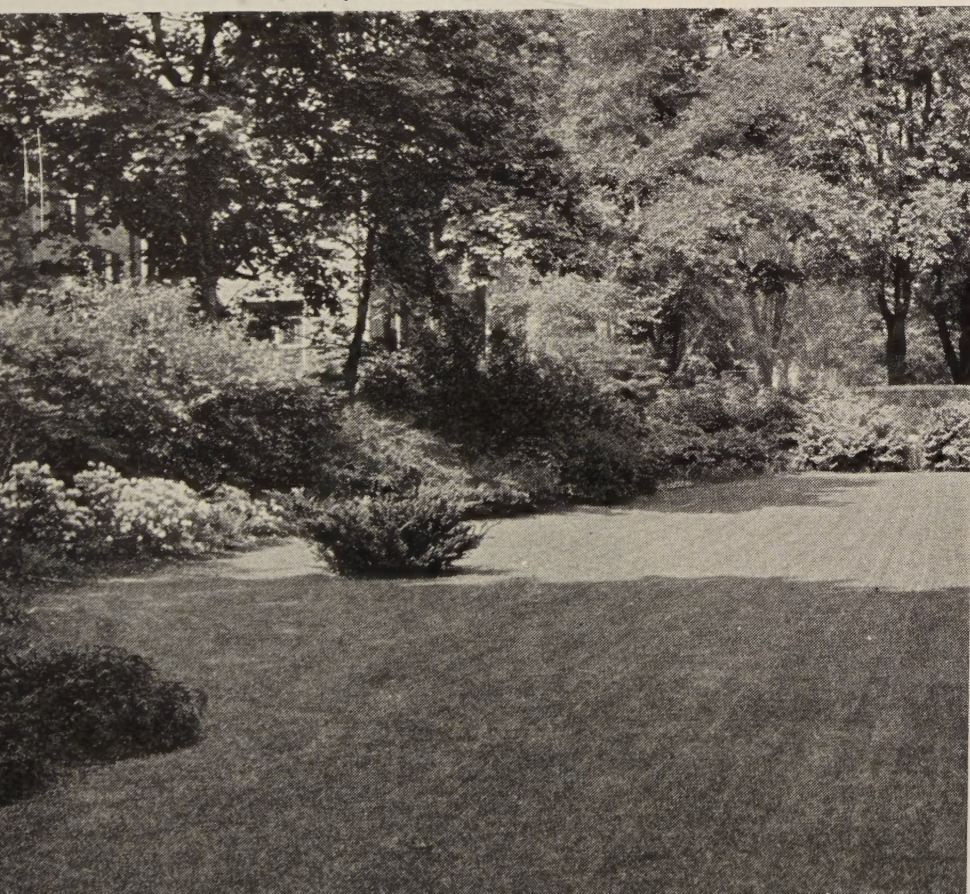


Above, from the "Forbes" Lawn Grass Seed

## Be Sure to See the Lawn Exhibits at Our Display Garden on Route 10, Hanover, N. J.

So that you may easily see the difference in turf textures and quality, we have planted grass plots, side by side, of the various lawn seed mixtures as well as of the individual grass varieties. These afford a splendid and convenient opportunity for you to make comparisons. All are plainly labeled.

Below, from our Elite Lawn Grass Seed



# Forbes Lawn Seed for Every Need

The best in seeds and care is essential to have a fine lawn. Forbes quality, known the country over, has set a high lawn standard, and Forbes service is at your disposal at all times.

Many grades of lawn grass seeds of varying qualities are offered for sale. Many contain seeds of worthless character, chaff, and weed seeds. Often a single variety or a blend of two grasses is sold as lawn seed. The best lawn is produced from a mixture of several natural grasses. To be of greatest value, these grasses must be properly proportioned in the mixture so that there is enough of each to serve its specific purpose.

The mixtures we offer, made up from special formulæ, are the result of years of experiment and of practical tests. Each mixture will produce a turf ideally suited to each purpose.

## The "Forbes" Lawn Grass Seed

A rapid-growing combination of grasses which produces in from four to six weeks, a permanent lawn capable of withstanding heavy wear. It contains seeds of five dwarf evergreen and perennial grasses of fine lawn texture. Definite proportions of these are mixed very thoroughly. The resultant lawn has a fine, even, rich green appearance and a permanency not usually found. Known for its high quality, it is higher priced than ordinary store mixtures but cheapest in the long run. It contains only heavy, re-cleaned, live seeds, free from worthless chaff, timothy and weed seeds. We do not use White Clover seed in this mixture.

½lb. 30 cts.; lb. 55 cts.; 2 lbs. \$1; 5 lbs. \$2.40; 10 lbs. \$4.75; 25 lbs. \$11.50; 100 lbs. \$43, delivered. Complete directions with every package. For quickest results sow one pound to every 100 sq. ft. (10 x 10 ft.) of new ground, or 400 lbs. to the acre. Half this quantity gives good results but takes longer.

## Elite Lawn Grass Seed

A very superior blend of only the finest and most desirable separate lawn grasses in such proportion as to produce a perfect lawn, but one which requires no special care such as our Super-Bent Mixture. The Elite turf is of very fine texture and splendid deep green color yet is sturdy and withstands normal wear. It lends itself to easy mowing and because of its thick, close root-mat discourages the growth of ordinary weeds. It is not mixed to sell at a fixed price and is better value than cheaper mixtures.

Lb. 75 cts.; 2 lbs. \$1.45; 5 lbs. \$3.50; 10 lbs. \$6.50; 25 lbs. \$15.75; 100 lbs. \$60, delivered.

## Branch Brook Park Lawn Grass Seed

This mixture, named for one of Newark's beautiful parks, is recommended for use where the low cost of materials is of more importance than extreme fineness of turf. The individual grasses used are of fine re-cleaned quality and high vitality. It will take about five weeks to produce a good covering of turf. This will withstand normal wear and has a fine color. We include White Clover in this mixture.

½lb. 25 cts.; lb. 45 cts.; 2 lbs. 85 cts.; 5 lbs. \$2.10; 10 lbs. \$4; 25 lbs. \$9.50; 100 lbs. \$36, delivered.

## Super-Bent Lawn Grass Seed

This mixture contains Bent Grass varieties only and will, on rich soils, with careful seeding, rolling, and watering, quickly produce that ideal velvety, deep, carpet-like, rich green fine turf you see on a well-kept putting-green. This perfect lawn can be maintained if given the frequent cutting, rolling, feeding, and watering it requires. At least four times through each growing season, apply 1 pound of sulphate of ammonia to each 150 square feet, first mixing it thoroughly with several times its bulk of screened soil. Top-dress the lawn each spring and fall with Forbes Super Lawn Fertilizer.

Lb. 85 cts.; 2 lbs. \$1.60; 5 lbs. \$3.85; 10 lbs. \$7.50; 25 lbs. \$18; 100 lbs. \$70, delivered. Sow 1 lb. to 200 sq. ft.; 200 lbs. per acre

## Lawn Clovers

**Kent Clover** (Wild White Clover). The plants bear fewer blossoms than ordinary white Clover, grow very close to the ground, are tenacious and form a dark green, thick sward. Oz. 35 cts.; ¼lb. \$1; lb. \$3.; 10 lbs. \$27.50.

**White Clover.** A very hardy creeping perennial with dark green compact foliage. Used where it is difficult to produce a lawn with grass seed only. Use 1 lb. with 25 lbs. of lawn seed. ¼lb. 40 cts.; ½lb. 70 cts.; lb. \$1.30; 10 lbs. \$12; 100 lbs. \$110.



# Forbes Lawn Seed for Every Need

When comparing prices look on the package for the percentage analysis required by State Law. You'll find that you get your money's worth if you buy the "Forbes" Lawn Seed.

## Shady Place Lawn Grass Seed

It is difficult to grow grass in the shade and under trees because the trees use up nearly all the food and moisture in the soil. This mixture will thrive better than any other and is the best possible for under trees. Water frequently until grass is well started.

½lb. 40 cts.; lb. 70 cts.; 2 lbs. \$1.30; 5 lbs. \$3.15; 10 lbs. \$6; 25 lbs. \$14.50; 100 lbs. \$55, delivered.

## Terrace Lawn Grass Seed

The grasses used for a sloping bank or terrace must have such roots as will withstand the washing caused by heavy rains. This mixture forms a network of densely matted roots of deep-rooting character. These deep roots will better withstand drought during the summer as they reach down below the surface dryness. After seeding, cover with a little soil and firm down to keep from washing out. On steep slopes it is sometimes best to cover after seeding with sheet burlap, pegged down.

½lb. 40 cts.; lb. 70 cts.; 2 lbs. \$1.30; 5 lbs. \$3.15; 10 lbs. \$6; 25 lbs. \$14.50; 100 lbs. \$55, delivered.

## Special New Jersey Lawn Mixtures

We offer below the Lawn Grass Seed Mixtures we have prepared from highest quality individual grasses, in accordance with the formulæ recommended and published by the New Jersey State Agricultural Experiment Station, at New Brunswick, N. J.

**Formula No. 1A.** (Contains no White Clover.)  
For fair to good soils. Lb. 55 cts.; 5 lbs. \$2.40;  
10 lbs. \$4.50; 25 lbs. \$11; 100 lbs. \$43.

**Formula No. 2.** For finest quality turf. Lb. 70 cts.;  
5 lbs. \$3.25; 10 lbs. \$6.25; 25 lbs. \$15.25; 100 lbs. \$60.

**Formula No. 3.** For shaded areas. Lb. 80 cts.; 5 lbs.  
\$3.80; 10 lbs. \$7.25; 25 lbs. \$17; 100 lbs. \$65.

**Formula No. 4.** This mixture is specially made for  
poor clay soils, shale or sandy soils. Lb. 60 cts.;  
5 lbs. \$2.80; 10 lbs. \$5.40; 25 lbs. \$13; 100 lbs. \$50.

We ship all Lawn Grass Seed Mixtures, transportation free, to any point in the U. S. A.

## Individual Grass Seeds

These are true, unblended new crop, re-cleaned to the highest purity and germination. The prices below are subject to market changes

**Bent, Colonial or Rhode Island (*Agrostis tenuis*).** Makes excellent fine turf on moist soils. Lasts indefinitely under close mowing. This variety thrives well on acid soils. For lawn, sow 175 lbs. to the acre. Lb. \$1.25; 10 lbs. \$12; 100 lbs. \$100.

**Bent, Netherlands Mixed (*Agrostis species*).** Makes thick velvety, very fine-leaved turf. For lawn, sow 175 lbs. to the acre. Lb. \$1.75; 10 lbs. \$16.50; 100 lbs. \$150.

**Canada Blue Grass (*Poa compressa*).** A suitable grass for hard, dry soils. Excellent for rooting on steep places. Sow 42 lbs. to the acre. Lb. 60 cts.; 10 lbs. \$5.50; 100 lbs. \$45.

**Chewing's New Zealand Fescue (*Festuca rubra fallax*).** Mat-like, green, tough turf with needle-like, bristly leaves suited to almost all soils including sand. Does well in shade. Fine for lawns. For lawn, sow 40 lbs. per acre. Lb. 75 cts.; 10 lbs. \$7; 100 lbs. \$60.

**Domestic Ryegrass.** This is a mixture of Italian Ryegrass and English Ryegrass, grown in the United States. Lb. 30 cts.; 10 lbs. \$2.50; 100 lbs. \$15.

**Perennial Ryegrass (*Lolium perenne*).** Forms compact sward, bright green through season, and is a rapid grower. Sow 60 lbs. to the acre. Lb. 35 cts.; 10 lbs. \$3; 100 lbs. \$25.

**Italian Ryegrass (*Lolium italicum*).** Thrives on any good soil and is unequalled for feed early in the spring as well as throughout the season. Responds to rich food and moisture and is a rapid grower. Sow 50 lbs. to the acre. Lb. 40 cts.; 10 lbs. \$3.25; 100 lbs. \$25.

**Kentucky Blue Grass, Superfine (*Poa pratensis*).** Suited to a variety of soils and used as pasture. It is unusually early, showing green in early spring when other grasses are still dormant. Sow 60 lbs. to the acre. Lb. 55 cts.; 10 lbs. \$5; 100 lbs. \$40.

**Meadow Fescue (*Festuca pratensis*).** Fine annual grass for permanent pastures, highly nutritious and relished by stock. Succeeds well in all soils but best on moist land. Grows over a long season. Sow 60 lbs. to the acre. Lb. 50 cts.; 10 lbs. \$4.50; 100 lbs. \$40.

**Orchard Grass (*Dactylis glomerata*).** Valuable on account of its earliness and rapid growth. Succeeds on any soil, especially in moist, shady places. As it is inclined to grow in tufts, sow it evenly. Sow 50 lbs. to the acre. Lb. 55 cts.; 10 lbs. \$5; 100 lbs. \$45.

**Redtop Fancy, Superfine (*Agrostis palustris*).** Used for mixing in hay or permanent pasture in a moist, rich soil where it attains a height of 2½ feet. We offer best quality re-cleaned seeds, free from chaff. Sow 32 lbs. to the acre. Lb. 45 cts.; 10 lbs. \$4; 100 lbs. \$30.

**Rough-stalked Meadow (*Poa trivialis*).** A spreading, thickly matting species; leaf blades narrow, flat and dark green. Forms a fine turf; adapted for shade on fairways under trees. Thrives on moist and stiff clay lands. Lb. \$2.25; 10 lbs. \$21; 100 lbs. \$200.

**Timothy (*Phleum pratense*).** Perennial, 4 feet high, thrives in moist, loamy soils. Sow 40 lbs. per acre. Lb. 25 cts.; 10 lbs. \$2; 100 lbs. \$15. (A bushel weighs 45 lbs.)

## Field Clovers

The prices below are subject to market changes. Samples and current prices on request. Please compare our quality when you consider other offers

**Alfalfa.** When once established Alfalfa has no equal as a hay-producer—three to four cuttings in a season—yielding from 4 to 6 tons per acre. It sends long taproots down into the sub-soil and is one of the best forage crops and valuable as a soil-enricher. Sow 20 to 30 lbs. per acre. Weighs 60 lbs. to the bushel. Lb. 65 cts.; 10 lbs. \$6; 100 lbs. \$50.

**Alsike.** The hardiest of all and stands freezing. Good for green forage, pasture, or hay, it is sown with other grasses and Clovers, forming a thick bottom and increasing the hay-yield. Sow, if alone, 8 lbs. per acre; if used with Red Clover and Timothy, add 3 lbs. per acre. Weighs 60 lbs. to the bushel. Lb. 50 cts.; 10 lbs. \$4.50; 100 lbs. \$35.

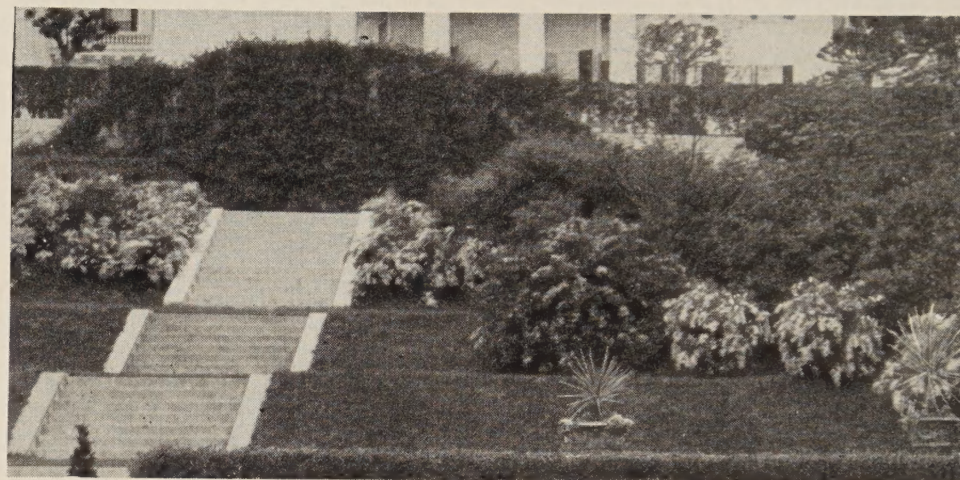
**Bokhara (Sweet White-flowering).** Flowers from June to September; 4 feet high. Fine for bees. Sow 10 lbs. to the acre. Weighs 60 lbs. to the bushel. Lb. 35 cts.; 10 lbs. \$3.

**Grimm Alfalfa.** Withstands low temperatures and cuts better in the fall than any. Has larger crowns, wider root-system, and yields heavier. Thrives in undrained wet soils. Sow 20 lbs. per acre. Weighs 60 lbs. to the bushel. Lb. 80 cts.; 10 lbs. \$7; 100 lbs. \$60.

**Red.** Does well on all except sour soils growing two crops per year 2 feet high. It yields 2 to 3 tons of cured hay per acre. If alone, sow broadcast 12 to 14 lbs. to the acre. Weighs 60 lbs. to the bushel. Lb. 55 cts.; 10 lbs. \$4.75; 100 lbs. \$40.



Sown with our Shady Place Lawn Grass Seed



Sown with our Terrace Lawn Grass Seed



# Forbes Summer-Flowering Bulbs

During recent years there has been a tremendous increase in the interest shown by flower fanciers in those summer and fall flowers produced from spring- and early summer-planted bulbs or roots. And yet when the ease of culture, adaptability to soil conditions, certainty of success and the beautiful color effects possible are considered, it is surprising that this interest has been so tardy. The remarkable advance in the development of this class of flowers has no doubt increased their popularity, and the range of color and form obtainable seems unlimited.



Fancy-leaved  
Caladiums



→  
Cannas

↑  
Amaryllis



## Amaryllis

These gorgeous blooms, with their wealth of color, are very easily grown for indoor display. Pot the bulbs singly in 6-inch pots in good garden loam enriched with bone-meal. Water slightly and keep in a dark place at 50 to 60° temperature for about a month until well rooted, then expose to full sun and water regularly. It is essential for good bloom that the roots become crowded in the pot. For this reason do not shift to a larger pot when the roots appear to be cramped, as they require very little soil.

**Giant-flowered Hybrids.** These bulbs produce four to six trumpet-like, perfect blooms on strong stems. The colors range from beautiful markings of rose, red, and crimson on white grounds to scarlet, crimson, bright red, cherry, and maroon self colors. 35 cts. each; \$3.50 per doz. Extra large, 60 cts. each.

## Begonias

These beautiful flowers make excellent beds and borders, and are also unusually fine for indoor house plants. They are of very easy culture. For bedding, plant the tubers outdoors late in May, 10 inches apart. They require ample moisture and good drainage. For indoor forcing, plant 3 tubers to a 7-inch pot in finely sifted, sandy loam containing leaf-mold. Cover with ½ inch of soil and water sparingly. Keep at 60 to 70° temperature. After good growth is made, water quite freely. Tubers may be started indoors in March or April and later transplanted to beds outdoors to give earlier bloom.

**Single, Tuberous-rooted.** Effective for bedding. The waxy, broad-petaled, single flowers are produced in abundance on ample foliage. Excellent for planting in shade. Selected tubers of **Crimson, Pink, Scarlet, and Yellow**, 30 cts. each; \$3 per doz.

## Fancy-leaved Caladiums

Few, if any, of the summer foliage plants equal the Fancy-leaved Caladiums in their rich and gorgeous, yet soft, coloring. All the varieties are of marvelous beauty for the furnishing of the conservatory during the summer months, or even for outdoor bedding in shady or semi-shady positions. Bulbs do best if started in pots, planting one bulb to a 6-inch pot. Use a well-drained sandy loam, water sparingly, and keep at 60° until well started. Then water quite freely. **Extra-Choice Mixture**, 30 cts. each; \$3 per doz.

## Cinnamon Vine

A beautiful, rapid-growing summer climber with bright green, glossy foliage, and spikes of deliciously cinnamon-scented, white flowers. It is perfectly hardy. **Giant**, select roots, 15 cts. each; \$1.50 per doz.; \$9 per 100.

## Canna Roots

Cannas are the most economical and effective plants employed in our gardens. They bloom from early summer until frost in all sections of the country, succeeding in any sunny position in any kind of soil, but responding quickly to liberal treatment. For best results the beds should be spaded deeply, and a generous amount of well-decayed manure of any kind thoroughly incorporated, and at all times freely watered. Plant the dormant roots after May 15, spacing them 2 feet apart. Set them with the "eye" just above the ground. They are most effective when planted in masses of one variety.

**City of Portland.** A clear rose that does not fade during hot weather. The foliage is green. Ht. 5 ft.

**Eureka.** A free bloomer. Its perfect creamy white flowers stand well above the green foliage. Ht. 4½ ft.

**King Humbert.** Rich orange-scarlet flowers that measure 6 inches across, distinctly and numerous flecked with bright red. Its rich, coppery bronze, massive foliage is very striking. Ht. 5 ft.

**King Midas.** An ideal bedding variety. The canary-yellow flowers are of good size held well above the green foliage. A very free bloomer. Ht. 4 ft.

**The President.** Immense, glowing bright red flowers, 7 inches across when open, on the strong, erect stalks, well above the large, rich green foliage. Ht. 5 ft.

**Wintzer's Colossal.** A very effective, free-flowering, bright scarlet variety with large blooms often 8 inches across. The foliage is green. Ht. 5 ft.

**Largest dormant roots of any of above, 3 for 25 cts.; 85 cts. per doz.; \$6.50 per 100**

## Montbretias

One of the brightest of our summer-flowering bulbs. The bulbs should be set out during April or May, 3 to 6 inches apart, 4 inches deep, in clumps of a dozen or more. Protect during the winter with leaves.

**Mixed Hybrids.** A fine assortment of yellow, orange, and scarlet shades. 75 cts. per doz.; \$5 per 100.

## Tuberose

One of the most delightfully fragrant and beautiful of the summer-flowering bulbs. By skillful management a succession of flowers may be obtained all the year round. For early flowers they can be started in February or March in the greenhouse or hotbed; and for a succession they can be planted at intervals as late as July. For flowering in the open, plant May 15, after the ground is warm.

**Excelsior, Double Pearl.** Big-flowering bulbs producing spikes 3 feet high, with very double waxy camellia-like flowers. 50 cts. per doz.; \$3.50 per 100. Largest bulbs, 80 cts. per doz., \$6 per 100.



## Forbes Gladiolus Bulbs

For charm and color, few other flowers compare with Gladiolus. They can be grown with very little effort as they thrive in ordinary garden soil. The tall green stems, fairly bursting with brilliant color, provide a luxuriance of rainbow beauty. For cut-flowers, Gladiolus are unexcelled. Mass them together in solid beds, plant them in borders, and among shrubbery. With successive planting from April through June, they will bloom from July until frost. Plant bulbs 4 inches deep and 4 inches apart, cultivating frequently and watering freely. They revel in full sunshine.

### The Cream of the Gladiolus Varieties

**Bagdad.** A midseason variety with flowers often 6 inches across. They are of an attractive smoky old-rose shade deepening toward the edges and lighter in the throats. 50 cts. per doz.; \$3.50 per 100.

**Commander Koehl.** One of the best reds—a brilliant scarlet-blood-red. This is a late variety with large flowers on tall stems. 60 cts. per doz.; \$4.50 per 100.

**Debonair.** A delightful pink with cream markings in the throat and a light suffusion of crimson sometimes flaked dark pink. A fine midseason variety. 50 cts. per doz.; \$3.50 per 100.

**Dr. F. E. Bennett.** Huge deep fiery scarlet blooms suffused peach-red, the lips being speckled with ruby and white. The wide-open flowers are held on stiff stems. 50 cts. per doz.; \$3.50 per 100.

**Early Dawn.** Beautiful geranium-pink flowers of large size coming early on tall strong stems. 65 cts. per doz.; \$5 per 100.

**Flaming Sword.** A very early variety with as many as ten flowers open at one time. They are brilliant red overlaid with orange and well placed on tall stems. 50 cts. per doz.; \$3.50 per 100.

**Gate of Heaven.** This is the deepest yellow of all, forming large ruffled florets in nicely formed spikes. An early variety. 60 cts. per doz.; \$4.50 per 100.

**Gold Eagle.** An attractive very early variety with frilled deep clear yellow petals. 50 cts. per doz.; \$3.50 per 100.

**Kassel.** Beautiful well-formed large flowers of bright scarlet without markings. A magnificent red variety. 60 cts. per doz.; \$4.50 per 100.

**King Arthur.** Large ruffled, fluted lavender-pink florets penciled with darker markings. A fine early variety. 60 cts. per doz.; \$4.50 per 100.

**Maid of Orleans.** A fine midseason variety having beautiful pure white florets with creamy throats. 60 cts. per doz.; \$4.50 per 100.

**Mammoth White.** One of the largest varieties with splendid pure white florets often 7 inches across. Midseason in maturing. 60 cts. per doz.; \$4.50 per 100.

**Minuet.** Late sort but with unusually beautiful, clear, light lavender-pink florets, often 6 open at one time, on strong stems. 60 cts. per doz.; \$4.50 per 100.

**Orange Princess.** A grand early, slightly ruffled variety with pure salmon-orange florets, slightly paler in the throats. 65 cts. per doz.; \$5 per 100.

**Pelegrina.** Large individual florets of fine dark violet-blue. The blooms come early on good strong stems. 60 cts. per doz.; \$4.50 per 100.

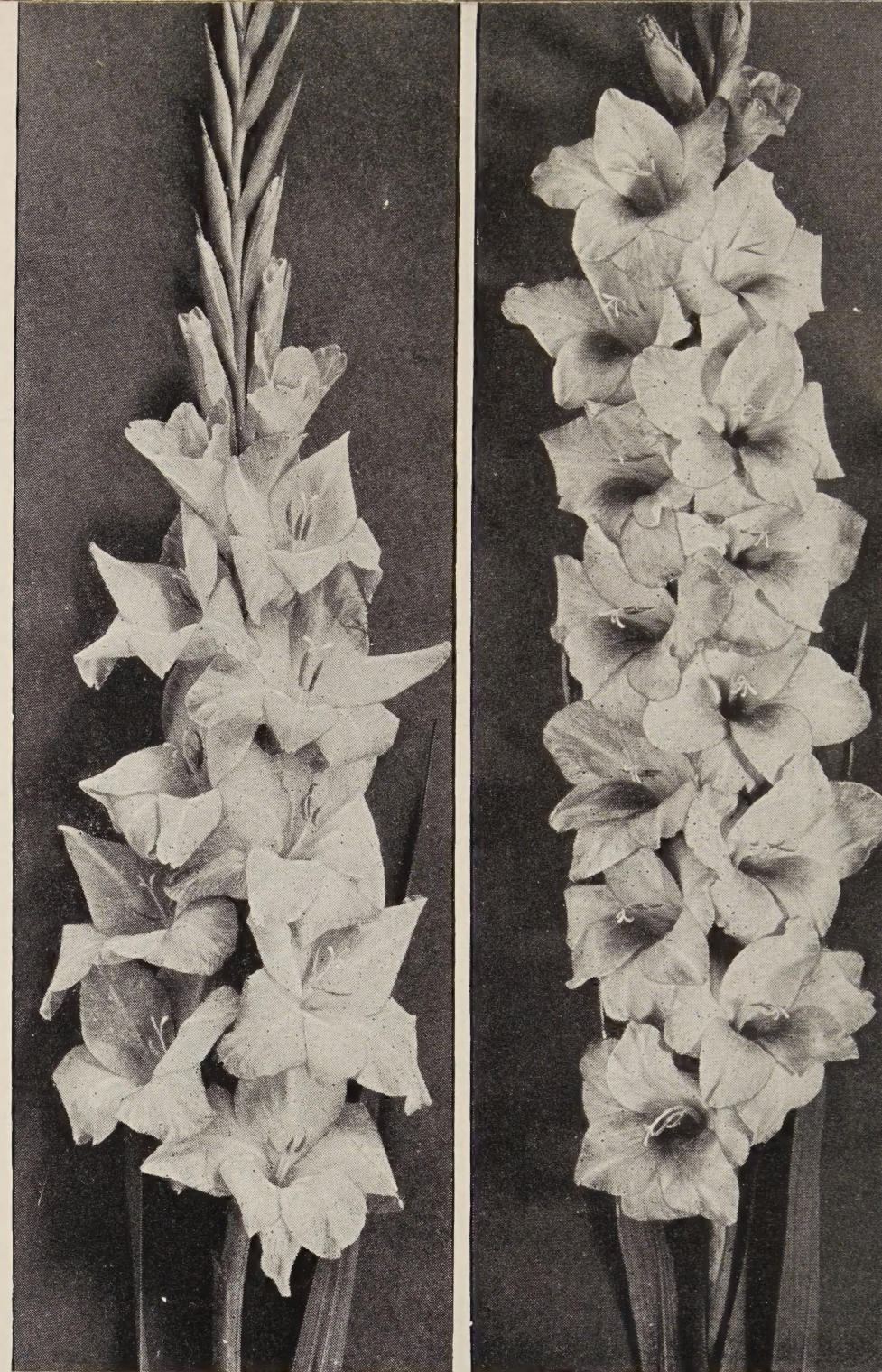
**Picardy.** This gorgeous delicate apricot-pink variety elicits universal admiration. The extremely large florets are somewhat ruffled and of heavy wax-like appearance. A splendid midseason sort. 50 cts. per doz.; \$3.50 per 100.

**Red Lory.** A fine midseason Gladiolus with large red spotted carmine-rose florets, many open at one time. 60 cts. per doz.; \$4.50 per 100.

**Rosa van Lima.** An exceptionally fine pure light pink variety with attractive florets well spaced on strong, straight stems. \$1 per doz.; \$7.50 per 100.

**Sonatine.** Often 5 florets open at one time on tall straight stems. They are light pink with small cherry blotches. 60 cts. per doz.; \$4.50 per 100.

**Vagabond Prince.** An unusual variety with shining reddish brown florets, the lower petals splashed with vermilion. Often 8 well-spaced florets open at one time. 85 cts. per doz.; \$6.50 per 100.



### Forbes Rainbow Gladiolus Mixture

We make this with bulbs of ten different shades of color

Plan *now* for a rainbow display of Gladiolus in this year's garden. These wonderful summer flowers, with their wide color range, will brighten your borders from July until frost. Easily grown and thrive in any garden soil. Forbes famous Rainbow Gladiolus Mixture is especially prepared from largest-sized bulbs of **ten** distinct *named* varieties of **ten** different shades of color. This is far superior to ordinary commercial bulb mixtures of unknown color balance. Each 50 bulbs consists of 5 bulbs of each shade, assuring evenly distributed colors.

35 cts. for 10 bulbs; \$1.50 for 50; \$2.75 per 100; \$25 per 1000

### Three Outstanding Varieties

**Beacon.** A bright rose-scarlet with a very large cream throat-blotch. Tall spike, heavily budded, many flowers open at one time. Very sturdy. 85 cts. per doz.; \$6.50 per 100.

**Peggy Lou.** Pink florets with a blue suffusion giving an opalescent effect. An excellent variety for cutting. 85 cts. per doz.; \$6.50 per 100.

**Shirley Temple.** Beautifully ruffled large white florets with cream throat. One of the finest for exhibition if grown in partial shade. 85 cts. per doz.; \$6.50 per 100.



# Hardy Perennial Plants

The Perennial Plants we offer are of unusually large size, in large pots, with ample soil for strong root development. They are plants produced to succeed in your garden rather than for a conveniently small size for shipping. When you see them in the sales beds at our display garden on Route 10, Hanover, N. J., you will instantly recognize their superior quality.

We lift the plants, in pots, and place them in your car. Within the hour you can remove the pots and set the plants out in your garden, to continue their growth unchecked. Besides this, our large plants provide earlier, fuller bloom the first season, without loss.

For equal cost our plants are far superior. Come and make your own selection and take them with you, or send in your order and we will deliver within our delivery area. See inside back cover.



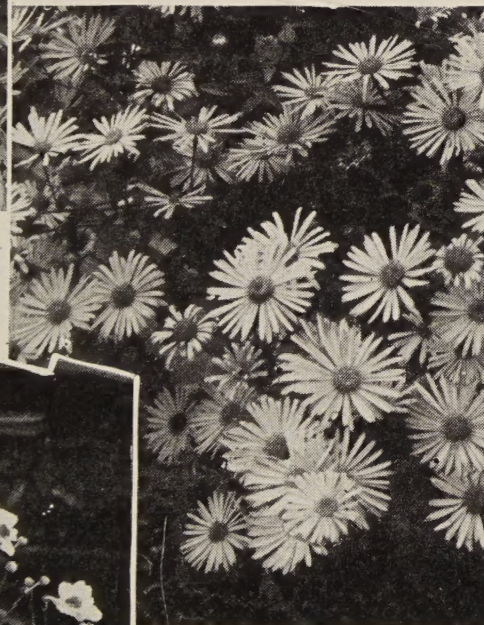
Aethionema



Arenaria montana



Asclepias tuberosa



Aster frikartii



Anemone japonica

In column headed Sun, ○ means full sun, ⊙ half shade-half sun, ● full shade		Color	Height	Time of Bloom	Sun	Soil	Uses	Each	3 for
<b>ACHILLEA</b> (Milfoil or Yarrow)									
	Filipendulina	Bright yellow	3-4 ft.	All summer	○	Not rich	Border; cutting	\$0.35	\$0.90
	Ptarmica, Snowball	White; double	1½-2 ft.	All summer	○	Dry	Border; cutting	.35	.90
	Tomentosa	Bright yellow	8 in.	All summer	○	Dry	Edges; rockery	.35	.90
<b>ÆTHIONEMA</b> (Persian Candytuft)									
	Persicum	Rosy pink	6-9 in.	June-July	○	Dry; sand	Edges; rockery	.40	1.00
<b>AGROSTEMMA</b> (Mullein Pink)									
	Coronaria	Rosy crimson	2½-3 ft.	June-July	○	Any	Borders	.35	.90
<b>AJUGA</b> (Bugle)									
	Genevensis	\$18 per 100 Lilac-blue	6-8 in.	May-June	⊙	Any	Carpets; edges	.30	.75
	Pink Spire	\$21 per 100 Soft pink	6-9 in.	June-July	⊙	Any	Carpet; rockery	.35	.90
	Reptans rubra	\$18 per 100 Purplish blue	3-4 in.	May-June	⊙	Any	Ground-cover	.30	.75
<b>ALYSSUM</b>									
	Saxatile citrinum	Pale yellow	1 ft.	April-June	○	Drained	Edges; rockery Carpeting Rock walls	.35	.90
	Saxatile compactum	Golden yellow	1 ft.	April-June	○	Drained		.30	.75
	Saxatile flore-pleno	Dbl.; gold. yel.	1 ft.	April-June	○	Drained		.35	.90
<b>ANCHUSA</b> (Alkanet or Bugloss)									
	Dropmore	Gentian-blue	4-5 ft.	May-July	○	Drained	Borders	.30	.75
	Feltham Pride	Gentian-blue	2-3 ft.	May-July	○	Drained	Border; massing	.40	1.00
	Myosotidiflora	Clear blue	1 ft.	May-June	⊙	Drained	Edges; rockery	.40	1.00
<b>ANEMONE</b> (Windflower)									
	Japonica, Alice	Rose-pink	2-3 ft.	Aug.-Oct.	⊙	Any	Border; cutting	.35	.90
	Japonica, Double Rose	Rose	2-3 ft.	Aug.-Oct.	⊙	Any	Border; cutting	.35	.90
	Japonica, Queen Charlotte	Purple-rose	2-3 ft.	Aug.-Oct.	⊙	Any	Border; cutting	.35	.90
	Japonica, September Charm	Silvery pink	2 ft.	Aug.-Oct.	⊙	Any	Border; cutting	.35	.90
	Japonica, Whirlwind	Double; white	2-3 ft.	Aug.-Oct.	⊙	Any	Border; cutting	.35	.90
	Japonica, White	Single; white	2-3 ft.	Aug.-Oct.	⊙	Any	Border; cutting	.35	.90
	Pulsatilla (Pasque Flower)	Rose-lilac	9-12 in.	April-May	○	Drained	Border; rockery	.35	.90
<b>ANTHEMIS</b> (Yellow Marguerite)									
	Moonlight	Pale yellow	2½ ft.	All summer	○	Any	Border; cutting	.45	1.20
	Tinctoria Kelwayi	Bright yellow	2½ ft.	All summer	○	Any	Border; cutting	.30	.75
	Tinctoria, Perry's Variety	Golden yellow	1½ ft.	All summer	○	Any	Border; cutting	.35	.90
<b>AQUILEGIA</b> (Columbine)									
	Long-spurred, Blue Shades	Various blues	2½-3 ft.	May-June	⊙	Humus	Border; cutting	.35	.90
	Long-spurred, Copper Queen	Copper-red	2½ ft.	May-June	⊙	Humus	Border; cutting	.35	.90
	Long-spurred, Crimson Star	White centers	2½ ft.	May-June	⊙	Humus	Border; cutting	.35	.90
	Long-spurred, Longissima	Pale yellow	1½ ft.	June	⊙	Humus	Border; cutting	.35	.90
	Long-spurred, Rose Queen	Rose shades	2½ ft.	May-June	⊙	Humus	Border; cutting	.35	.90
	Long-spurred, Snow Queen	Pure white	2½ ft.	May-June	⊙	Humus	Border; cutting	.35	.90
	Edelweiss nana compacta	Snow-white	1½ ft.	May-June	⊙	Humus	Border; cutting	.35	.90
	Hensol Harebell	Cool blue	2 ft.	May-June	⊙	Humus	Border; cutting	.35	.90
	Red Riding Hood (Double)	Old-rose	1 ft.	May-June	⊙	Humus	Border; rockery	.35	.90
<b>ARABIS</b> (Rock Cress)									
	Alpina, Double	Pure white	8 in.	April-June	○	Any	Cutting; edges	.40	1.00
	Alpina, Snowcap	Pure white	6 in.	April-June	⊙	Any	Rock walls	.35	.90
	Rosabella	Rose-pink	6 in.	April-June	○	Any	Border; rockery	.40	1.00
<b>ARENARIA</b> (Sandwort)									
	Montana	Silvery white	3-4 in.	May-June	○	Sandy	Rockery; edges	.35	.90
	Verna caespitosa	White	1-2 in.	May	⊙	Any	Carpet; walks	.35	.90
<b>ARMERIA</b> (Thrift)									
	Lauchiana	Rosy red	6-8 in.	April-June	○	Any	Edges; rockery	.30	.75
<b>ARTEMISIA</b> (Ghost Plant)									
	Silver King	Silver mist	2½-3 ft.	April-Oct.	○	Any	Contrast plant	.30	.75
<b>ASCLEPIAS</b> (Butterfly Weed)									
	Tuberosa	Red-orange	1½-2 ft.	July-Aug.	○	Dry	Border; cutting	.30	.75



In column headed Sun, O means full sun, ⊙ half shade-half sun, ● full shade		Color	Height	Time of Bloom	Sun	Soil	Uses	Each	3 for
<b>ASTER (Michaelmas Daisy)</b>									
Beechwood Challenger		Crimson-red	2½-3 ft.	Sept.-Oct.	⊙	Any	Border; cutting	\$0.45	\$1.20
Harrington's Pink		Rose-pink	3-4 ft.	Sept.-Oct.	⊙	Any	Border; cutting	.45	1.20
Mt. Everest		Pure white	3-4 ft.	Sept.-Oct.	⊙	Any	Border; cutting	.45	1.20
Mulberry		Mulberry-red	3-4 ft.	Sept.-Oct.	⊙	Any	Border; cutting	.45	1.20
Royal Blue		Deep blue	3-3½ ft.	Sept.-Oct.	⊙	Any	Border; cutting	.45	1.20
<b>ASTER Species (Starwort)</b>									
Alpinus, Goliath		Blue-purple	6-10 in.	May-June	○	Any	Edges; rockery	.30	.75
Amellus, King George		Violet-blue	2½ ft.	Sept.-Oct.	○	Any	Border; cutting	.45	1.20
Frikarti, Wonder of Staefa		Lavender-blue	2-3 ft.	June-Nov.	⊙	Any	Border; cutting	.45	1.20
Star of Wartburg		Lilac-blue	14 in.	June-July	⊙	Any	Border; cutting	.35	.90
<b>AUBRIETIA (Rainbow Rockcress)</b>									
Monarch Mixture		Pink to purple	6 in.	April-May	⊙	Drained	Edges; rockery	.35	.90
<b>CAMPANULA (Cup-and-Saucer)</b>									
Calycanthema, Dark Blue		Blue-purple	2½-3 ft.	June	○	Rich	Border; cutting	.30	.75
Calycanthema, Light Blue		Lilac-blue	2½-3 ft.	June	○	Rich	Border; cutting	.30	.75
Calycanthema, Pink		Rose-pink	2½-3 ft.	June	○	Rich	Border; cutting	.30	.75
Calycanthema, White		Pure white	2½-3 ft.	June	○	Rich	Border; cutting	.30	.75
<b>CAMPANULA (Canterbury Bells)</b>									
Medium, Single, Dark Blue		Blue-purple	2½-3 ft.	June	○	Rich	Border; cutting	.30	.75
Medium, Single, Light Blue		Lilac-blue	2½-3 ft.	June	○	Rich	Border; cutting	.30	.75
Medium, Single, Pink		Rose-pink	2½-3 ft.	June	○	Rich	Border; cutting	.30	.75
Medium, Single, White		Pure white	2½-3 ft.	June	○	Rich	Border; cutting	.30	.75
<b>CAMPANULA (Bellflower)</b>									
Carpatica (Harebell)		Lavender-blue	8 in.	June-Oct.	○	Rich	Edges; rockery	.30	.75
Carpatica, White		White	8 in.	June-Oct.	○	Rich	Edges; rockery	.30	.75
Garganica		Pale blue	3-6 in.	June	○	Limed	Rock walls	.40	1.00
Persicifolia, Telham Beauty		China-blue	2-3 ft.	June-July	⊙	Rich	Border; cutting	.45	1.20
Persicifolia, White		White	2 ft.	June-Aug.	⊙	Rich	Border; cutting	.35	.90
Rotundifolia (Scotch B.B.)		Light blue	1 ft.	July & Sept.	⊙	Drained	Rockery; slopes	.40	1.00
<b>CARNATION, Hardy Border</b>									
Grenadin, Half-High, Black-Red		Dark red	20 in.	All summer	○	Any	Border; cutting	.30	.75
Grenadin, Half-High, Rose		Rose-pink	20 in.	All summer	○	Any	Border; cutting	.30	.75
Grenadin, Half-High, Scarlet		Scarlet	20 in.	All summer	○	Any	Border; cutting	.30	.75
Grenadin, Half-High, White		White	20 in.	All summer	○	Any	Border; cutting	.30	.75
Grenadin, Dwarf Double Red		Scarlet	15 in.	All summer	○	Any	Border; cutting	.30	.75
<b>CENTAUREA (Cornflower)</b>									
Macrocephala		Golden yellow	2½-3 ft.	July-Aug.	○	Any	Borders	.30	.75
Montana		Violet-blue	2 ft.	June-Sept.	○	Any	Border; cutting	.30	.75
Montana, White		Pure white	2 ft.	June-Sept.	○	Any	Border; cutting	.30	.75
<b>CERASTIUM (Snow-in-Summer)</b>									
Tomentosum		White	6-8 in.	May-June	○	Dry	Edges; rockery	.30	.75
<b>CHEIRANTHUS (Wallflower)</b>									
Allioni (Siberian Wallflower)		Fiery orange	1 ft.	May-June	○	Drained	Border; rockery	.30	.75
<b>CHRYSANTHEMUM, GARDEN</b>									
<b>CHRYSANTHEMUM (Shasta Daisy). Maximum, Alaska</b>									
Maximum, Chiffon		Single; white	2-2½ ft.	June-Sept.	○	Any	Border; cutting	.30	.75
Maximum, Esther Reed		Fripled; white	1½ ft.	June-Sept.	⊙	Any	Border; cutting	.45	1.20
Maximum, Phyllis Elliott		Double; white	1½ ft.	June-Oct.	○	Any rich	Border; cutting	.60	1.65
Maximum, Phyllis Elliott		Fripled; white	2 ft.	June-Sept.	○	Any rich	Border; cutting	.45	1.20
<b>CHRYSANTHEMUM Species</b>									
Arcticum		Pure white	1½ ft.	Sept.-frost	○	Any rich	Border; cutting	.35	.90
Arcticum, Astrid		Shell-pink	2 ft.	Sept.-Nov.	○	Any rich	Border; cutting	.40	1.00
Leucanthemum, White Swan		Double; white	2½ ft.	May-June	○	Any rich	Border; cutting	.35	.90
<b>COREOPSIS (Tickseed)</b>									
California Sunbeams		Golden yellow	2½ ft.	June-Sept.	○	Medium	Border; cutting	.30	.75
Double Sunburst		Golden yellow	2-2½ ft.	June-Sept.	○	Medium	Border; cutting	.35	.90
<b>DELPHINIUM (Hardy Larkspur)</b>									
Belladonna, Cliveden Beauty		Turquoise-blue	4 ft.	June & Sept.	⊙	Rich, med.	Border; cutting	.40	1.00
Bellamosa		Dark blue	4 ft.	June & Sept.	⊙	Rich, med.	Border; cutting	.40	1.00
Blackmore & Langdon's Hybrids		Blue to pink	5-6 ft.	June & Sept.	⊙	Rich, med.	Border; cutting	.45	1.20
Chinense		Gentian-blue	1½ ft.	July-Aug.	⊙	Rich, med.	Border; cutting	.30	.75
Chinense, Blue Butterfly		Ultramarine	1½ ft.	July-Aug.	⊙	Rich, med.	Border; cutting	.30	.75
Chinense, White		White	1½ ft.	July-Aug.	⊙	Rich, med.	Border; cutting	.30	.75
Iceberg		White	5-6 ft.	June & Sept.	⊙	Rich, med.	Border; cutting	.35	.90
Pacific Giant, Dark Blue		Dark blue	5-7 ft.	June & Sept.	⊙	Rich, med.	Border; cutting	.55	1.50
Pacific Giant, Light Blue		Light blue	5-7 ft.	June & Sept.	⊙	Rich, med.	Border; cutting	.55	1.50
Pacific Giant, Violet		Violet	5-7 ft.	June & Sept.	⊙	Rich, med.	Border; cutting	.55	1.50
Pacific Giant, White		White	5-7 ft.	June & Sept.	⊙	Rich, med.	Border; cutting	.55	1.50
Wrexham Hybrids		Blue to violet	6 ft.	June & Sept.	⊙	Rich, med.	Border; cutting	.45	1.20
<b>DIANTHUS barbatus</b>									
Sweet William, Dark Crimson		Single; crimson	1½ ft.	May-June	○	Any	Border; cutting	.30	.75
Sweet William, Giant White		Single; white	1½ ft.	May-June	○	Any	Border; cutting	.30	.75



Dianthus deltooides



Delphinium, Wrexham Hybrids



Chrysanthemum maximum  
Esther Reed



Campanula carpatica



Aster, Harrington's Pink



Campanula garganica





Dictamnus fraxinella



Dianthus superbus, Loveliness



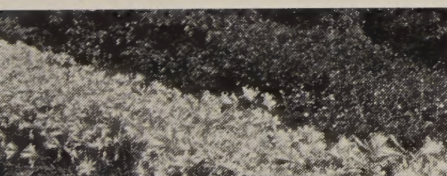
Helium, Chippersfield Orange



Gypsophila repens, Rosy Veil



Dicentra eximia



Hemerocallis (Day-Lilies)



In column headed Sun, ○ means full sun, ⊙ half shade-half sun, ● full shade	Color	Height	Time of Bloom	Sun	Soil	Uses	Each	3 for
Sweet William, Newport Pink	Single; salmon	1½ ft.	May-June	○	Any	Border; cutting	\$0.30	\$0.75
Sweet William, Purple Beauty	Single; purple	1½ ft.	May-June	○	Any	Border; cutting	.30	.75
Sweet William, Scarlet Beauty	Single; scarlet	1½ ft.	May-June	○	Any	Border; cutting	.30	.75
Sweet William, Dwarf Double	Mixed	6-8 in.	May-June	○	Any	Edges; rockery	.30	.75
<b>DIANTHUS (Garden Pink)</b>								
Latifolius, Beatrice	Soft pink	9-12 in.	May-Sept.	○	Any	Border; rockery	.35	.90
Latifolius, Furst Bismarck	Rose-pink	9-12 in.	May-Sept.	○	Any	Border; rockery	.35	.90
Plumarius, Double Scoticus	Various	12-15 in.	May-June	○	Any	Border; cutting	.30	.75
Plumar., Double Spring Beauty	Various	12-15 in.	May-June	○	Any	Border; cutting	.30	.75
Plumarius, Highland Hybrids	Single; various	9-12 in.	May-Sept.	○	Any	Edges; rockery	.30	.75
Plumarius, Mrs. Sinkins	Double; white	9-12 in.	May-June	○	Any	Edges; rockery	.35	.90
Plumarius, Single Mixed	Various	15 in.	May-June	○	Any	Border; cutting	.30	.75
<b>DIANTHUS Species</b>								
Deltoides, Brilliant	Carmine-pink	4-6 in.	May-July	○	Any, rich	Edges; rockery	.30	.75
Superbus, Loveliness	Lavender-pink	10-12 in.	May-June	○	Any	Edges; cutting	.35	.90
Winteri, Mrs. Wormald	Rose-pink	8-10 in.	May-Sept.	○	Drained	Edges; rockery	.30	.75
<b>DICENTRA (Bleeding-Heart)</b>								
Eximia	Deep pink	1-1½ ft.	May-Oct.	●	Any	Border; rockery	.35	.90
Spectabilis	Pink	2-2½ ft.	May-June	⊙	Any	Border specimen	.45	1.20
<b>DICTAMNUS (Gas Plant)</b>								
Fraxinella caucasicus	Rosy pink	2½ ft.	June-July	○	Rich, med.	Border specimen	.45	1.20
<b>DIGITALIS (Foxglove)</b>								
Gloxiniæflora, Purple	Deep purple	3-4 ft.	June-July	⊙	Any	Border; massing	.30	.75
Gloxiniæflora, Rose	Rose-pink	3-4 ft.	June-July	⊙	Any	Border; massing	.30	.75
Gloxiniæflora, White	Pure white	2-3 ft.	June-July	⊙	Any	Border; massing	.30	.75
<b>DORONICUM (Leopardbane)</b>								
Caucasicum, Mme. Mason	Bright yellow	1½ ft.	May-June	⊙	Heavy	Border; cutting	.55	1.50
<b>EUPATORIUM (Hardy Ageratum)</b>								
Cælestinum	Purple-blue	12-14 in.	Aug.-Oct.	⊙	Any	Border; cutting	.30	.75
<b>EUPHORBIA (Spurge)</b>								
Polychroma (epithymoides)	Yellow	1-1½ ft.	May-June	○	Poor	Border; rockery	.35	.90
<b>FUNKIA (Hosta) (Plantain Lily)</b>								
Variegata	Blue	1 ft.	Aug.-Sept.	⊙	Rich	Border; edges	.30	.75
<b>GAILLARDIA (Blanket Flower)</b>								
Burgundy	Wine-red	2-2½ ft.	June-Oct.	○	Light	Border; cutting	.35	.90
Goblin	Yellow & red	15 in.	June-Oct.	○	Light	Border; cutting	.35	.90
Mr. Sherbrook	Golden yellow	2-2½ ft.	June-Oct.	○	Light	Border; cutting	.40	1.00
Portola Hybrids	Various	2½ ft.	June-Oct.	○	Light	Border; cutting	.30	.75
Tangerine	Orange-red	2½ ft.	June-Oct.	○	Light	Border; cutting	.35	.90
<b>GEUM (Avens)</b>								
Fire Opal	Orange-scarlet	2 ft.	May-Oct.	○	Good	Border; rockery	.45	1.20
Lady Stratheden	Golden yellow	2 ft.	May-Oct.	○	Good	Border; rockery	.35	.90
Mrs. Bradshaw	Orange-red	2 ft.	May-Oct.	○	Good	Border; rockery	.35	.90
Red Wings	Strawberry	2 ft.	June-Aug.	○	Good	Border; rockery	.45	1.20
Rijnstroom	Copper-orange	2 ft.	May-Oct.	○	Good	Border; rockery	.45	1.20
<b>GYPSOPHILA (Baby's Breath)</b>								
Bristol Fairy	Double; white	2-3 ft.	June-Sept.	○	Limed	Cutting; masses	.50	1.35
Paniculata compacta	Single; white	2-3 ft.	July-Aug.	○	Limed	Cutting; masses	.30	.75
Repens, Rosy Veil (Double)	Pale pink	2 ft.	May-Aug.	○	Limed	Cutting; masses	.40	1.00
<b>HEDERA (Ivy)</b>								
Helix (English Ivy)	Climber			●	Any	Ground-cover	Prices on request	
Helix gracilis (Baltica Ivy)	Climber			●	Any	Ground-cover		
Hahn's Branching	Climber			●	Any	Ground-cover		
<b>HELENIUM (Helen's Flower)</b>								
Chippersfield Orange	Copper-gold	4 ft.	Aug.-Sept.	○	Light	Border; cutting	.55	1.50
Peregrina	Mahogany	3 ft.	July-Aug.	○	Light	Border; cutting	.65	1.75
Riverton Gem	Old-gold	3-4 ft.	Aug.-Oct.	○	Light	Border; cutting	.35	.90
<b>HELIANTHEMUM (Sun-Rose)</b>								
Fireball (Double)	Bright scarlet	9 in.	June-Aug.	○	Dry, sand	Border; rockery	.35	.90
<b>HEMEROCALLIS (Day-Lily)</b>								
Cressida	Deep orange	3 ft.	July-Aug.	⊙	Any	Border; cutting	.40	1.00
Dr. Regel	Orange-yellow	1½-2 ft.	May-June	⊙	Any	Border; cutting	.35	.90
Estmere	Apricot-yellow	2½ ft.	May-June	⊙	Any	Border; cutting	.40	1.00
Flava	Clear yellow	2½-3 ft.	May-June	⊙	Any	Border; cutting	.35	.90
Hyperion	Citron-yellow	3½ ft.	July-Aug.	⊙	Any	Border; cutting	.75	2.00
Mikado	Deep orange	2½ ft.	June-July	⊙	Any	Border; cutting	.45	1.20
Thunbergi	Lemon-yellow	3 ft.	July-Aug.	⊙	Any	Border; cutting	.35	.90
<b>HERBS, GARDEN. See page 11.</b>								
<b>HEUCHERA (Coral Bells)</b>								
Pluie de Feu (Rain of Fire)	Coral-red	1½ ft.	June-July	⊙	Drained	Border; rockery	.35	.90
Rosamundi	Coral-pink	1½-2 ft.	June-July	⊙	Drained	Border; rockery	.35	.90
Sanguinea splendens	Vermilion-red	1½ ft.	June-July	⊙	Drained	Border; rockery	.35	.90
Snowflake	Snow-white	1½-2 ft.	June-July	⊙	Drained	Border; rockery	.35	.90











In column headed Sun, ○ means full sun, ⊙ half shade-half sun, ● full shade		Color	Height	Time of Bloom	Sun	Soil	Uses	Each	3 for
<b>HOLLYHOCK</b> ( <i>Altbæa rosea</i> )									
Double, Maroon	Maroon	5-7 ft.	July-Aug.	○	Rich, med.	Background		\$0.30	\$0.75
Double, Newport Pink	Salmon-pink	5-7 ft.	July-Aug.	○	Rich, med.	Background		.30	.75
Double, Red	Rich red	5-7 ft.	July-Aug.	○	Rich, med.	Background		.30	.75
Double, Bright Rose	Bright rose	5-7 ft.	July-Aug.	○	Rich, med.	Background		.30	.75
Double, White	Pure white	5-7 ft.	July-Aug.	○	Rich, med.	Background		.30	.75
Double, Yellow	Light yellow	5-7 ft.	July-Aug.	○	Rich, med.	Background		.30	.75
<b>IBERIS</b> (Candytuft)									
Jucunda	Lilac-pink	4-6 in.	May-June	○	Sandy	Edges; rockery		.40	1.00
Little Gem	Pure white	4 in.	June	⊙	Good	Edges; rockery		.35	.90
Queen of Italy	Rosy lilac	10 in.	May-June	○	Good	Edges; rockery		.35	.90
Snowflake	Pure white	8 in.	May-June	⊙	Any	Edges; rockery		.35	.90
<b>LIATRIS</b> (Gayfeather)									
Scariosa, September Glory	Purple	5 ft.	Aug.-Sept.	⊙	Any	Border; cutting		.40	1.00
Scariosa, White Spire	Pure white	5 ft.	Aug.-Sept.	⊙	Any	Border; cutting		.40	1.00
<b>LIMONIUM</b> (Statice)									
Dumosa	Lavender	20 in.	July-Aug.	○	Rich	Border; cutting		.35	.90
<b>LINUM</b> (Flax)									
Perenne, Blue	Pale blue	15-18 in.	May-Sept.	○	Sandy	Masses; rockery		.30	.75
Perenne, White	Pure white	15-18 in.	May-Sept.	○	Sandy	Masses; rockery		.30	.75
<b>LUPINUS</b> (Lupine)									
Russell	Various	3-3½ ft.	June-July	○	Moist	Border; cutting		.45	1.20
<b>LYCHNIS</b> (Campion)									
Chalcedonica	Vivid scarlet	3 ft.	June-Aug.	○	Good	Border accent		.30	.75
Viscaria, Double	Rose-crimson	14 in.	May-July	○	Any	Border; cutting		.35	.90
<b>LYTHRUM</b> (Loose-strife)									
Superbum, The Beacon	Rosy red	3-3½ ft.	July-Sept.	⊙	Moist	Border; cutting		.35	.90
<b>MERTENSIA</b> (Bluebell)									
Virginica	Blue to pink	1-1½ ft.	April-May	●	Moist	Woodland		.30	.75
<b>MONARDA</b> (Bee-balm; Bergamot)									
Didyma, Cambridge Scarlet	Crimson-scarlet	2½-3 ft.	June-Aug.	⊙	Good	Border; masses		.30	.75
Didyma, Salmon Queen	Salmon-pink	2½-3 ft.	June-Aug.	⊙	Good	Naturalizing		.30	.75
<b>NEPETA</b> (Catmint)									
Mussini	Blue-lavender	1 ft.	May-Sept.	○	Any	Edges; rockery		.30	.75
Six Hills Giant	Blue-lavender	1 ft.	May-Sept.	○	Any, dry	Border; cutting		.40	1.00
<b>NIEREMBERGIA</b> (Cup Flower)									
Rivularis	Creamy white	3-4 in.	June-Sept.	⊙	Rich, sand	Carpet; rockery		.35	.90
<b>PACHYSANDRA</b> (Japan. Spurge)									
Terminalis 25 plants for \$5	Green-white	6-8 in.	May-June	⊙	Any	Carpet: slopes			.75
<b>PAPAVER</b> (Iceland Poppy)									
Nudicaule, Art Shades	Pastels	1 ft.	All summer	○	Drained	Border; rockery		.35	.90
<b>PAPAVER</b> (Oriental Poppy)									
Orientele, Beauty of Livermere	Oxblood-red	3 ft.	May-June	○	Rich loam	Border accent		.40	1.00
Orientele, Fairy	Shrimp-pink	3 ft.	May-June	○	Rich loam	Border accent		.45	1.20
Orientele, Jeanne Mawson	Geranium-pink	3 ft.	May-June	○	Rich loam	Border accent		.45	1.20
Orientele, Mrs. Perry	Orange-apricot	3 ft.	May-June	○	Rich loam	Border accent		.40	1.00
Orientele, Scarlet	Crimson-scarlet	3 ft.	May-June	○	Rich loam	Border accent		.40	1.00
Orientele, Perry's White	Satiny white	3 ft.	May-June	○	Rich loam	Border accent		.45	1.20
Orientele, Salmon Glow, Dbl.	Salmon-orange	3 ft.	May-June	○	Rich loam	Border accent		.75	2.00
Orientele, Snowflake, White	Edged flame	3 ft.	May-June	○	Rich loam	Border accent		.75	2.00
<b>PENTSTEMON</b> (Beard Tongue)									
Barbatus, Pink Beauty	Shell-pink	2½-3 ft.	July-Sept.	○	Rich loam	Border; cutting		.35	.90
Garnet	Garnet-red	1½ ft.	All summer	○	Rich loam	Border; rockery		.55	1.50
<b>PHLOX</b> <i>decussata</i> (Hardy Phlox)									
Atlanta	White, tinted blue, blue eye	2½-3 ft.	July-Sept.	○	Rich	Border; cutting		.50	1.35
Augusta	Intense brilliant cherry-red	2½ ft.	July-Sept.	○	Rich	Border; cutting		.50	1.35
Cheerfulness	Salmon-orange, crimson eye	2½-3 ft.	July-Sept.	○	Rich	Border; cutting		.45	1.20
Columbia	Cameo-pink, faint blue eye	2-2½ ft.	July-Sept.	○	Rich	Border; cutting		.45	1.20
Enchantress	Bright salmon-pink, dark eye	2½-3 ft.	July-Sept.	○	Rich	Border; cutting		.40	1.00
Firetail	Carmine-red, blood-red eye	2-2½ ft.	July-Sept.	○	Rich	Border; cutting		.45	1.20
Harvest Fire	Very brilliant salmon-orange	2-2½ ft.	July-Sept.	○	Rich	Border; cutting		.45	1.20
Jules Sandeau	Brilliant watermelon-pink	2 ft.	July-Sept.	○	Rich	Border; cutting		.35	.90
Leo Schlageter	Vivid scarlet, orange sheen	3 ft.	July-Sept.	○	Rich	Border; cutting		.45	1.20
Mary Louise	Glistening pure snow-white	2-2½ ft.	July-Sept.	○	Rich	Border; cutting		.40	1.00
Miss Lingard	Pure white (Suffruticosa)	2 ft.	June-Sept.	○	Rich	Border; cutting		.35	.90
Rheinlander	Beautiful salmon-pink, red eye	2½ ft.	July-Sept.	○	Rich	Border; cutting		.35	.90
Salmon Beauty	Rich salmon-pink, white eye	2-2½ ft.	July-Sept.	○	Rich	Border; cutting		.45	1.20
Widar	Violet with clear white eye	2-2½ ft.	July-Sept.	○	Rich	Border; cutting		.35	.90
<b>PHLOX</b> <i>subulata</i> (Moss Pink)									
Atropurpurea	Carmine-red	6 in.	April-May	○	Dry, sand	Carpet; rockery		.30	.75
Blue Hill	Pale blue	6 in.	April-May	○	Dry, sand	Carpet; rockery		.30	.75
Rose	Rose-pink	6 in.	April-May	○	Dry, sand	Carpet; rockery		.30	.75
White	White	6 in.	April-May	○	Dry, sand	Carpet; rockery		.30	.75



Linum perenne



Mertensia virginica



Nierembergia rivularis



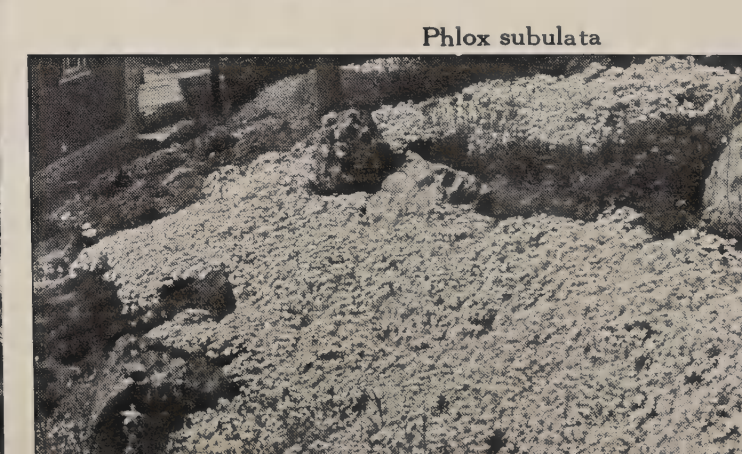
Pachysandra terminalis



Liatis  
scariosa



Phlox divaricata, see page 10



Phlox subulata





Rudbeckia Newmanni



Primula vulgaris



Sidalcea

Rosa rouletti



In column headed Sun, ○ means full sun, ⊙ half shade-half sun, ● full shade	Color	Height	Time of Bloom	Sun	Soil	Uses	Each	3 for
<b>PHLOX, VARIOUS</b>								
<i>Divaricata canadensis</i>	Lavender-blue	10 in.	April-May	⊙	Drained	Carpet; rockery	\$0.35	\$0.90
<i>Setacea camlaensis</i>	Pure pink	8 in.	May-June	○	Drained	Carpet; rockery	.45	1.20
<b>PHYSOSTEGIA (False Dragonhead)</b>								
Rosy Spire	Violet-rose	3-3½ ft.	Aug.-Sept.	⊙	Moist	Border; cutting	.40	1.00
<i>Virginica, Vivid</i>	Mauve-pink	1½-2 ft.	Aug.-Sept.	⊙	Moist	Border; cutting	.35	.90
<b>PLATYCODON (Balloon Flower)</b>								
<i>Grandiflora, Blue</i>	Bright blue	1½ ft.	All summer	○	Sandy	Border; rockery	.30	.75
<i>Mariesi</i>	Violet-blue	1 ft.	All summer	○	Sandy	Border; rockery	.30	.75
<i>Mariesi, White</i>	Pure white	1 ft.	All summer	○	Sandy	Border; rockery	.30	.75
<b>PLUMBAGO (Leadwort)</b>								
<i>Larpenæ</i>	Cobalt-blue	8-10 in.	July-Oct.	⊙	Drained	Edges; rockery	.35	.90
<b>POLEMONIUM (Jacob's Ladder)</b>								
Blue Pearl	Baby blue	1 ft.	April-May	⊙	Light	Border; rockery	.40	1.00
<i>Reptans</i>	Porcelain-blue	6-8 in.	April-May	●	Drained	Rockery; woods	.35	.90
<b>POLYANTHUS (Bunch Primrose)</b>								
Monarch, Mixed	Various	9 in.	April-June	●	Moist	Rockery; woods	.35	.90
<b>POTENTILLA (Cinquefoil)</b>								
Lady Rolleston	Bright orange	15-18 in.	June-Sept.	○	Light	Border; rockery	.50	1.35
<i>Warrensi</i>	Glossy yellow	2 ft.	May-Aug.	○	Light	Border; cutting	.40	1.00
<b>PRIMULA (Primrose)</b>								
<i>Vulgaris (English Primrose)</i>	Pale yellow	6-8 in.	April-May	⊙	Moist	Edges; rockery	.35	.90
<b>PULMONARIA (Lungwort)</b>								
<i>Angustifolia azurea</i>	Sky-blue	1 ft.	April-May	⊙	Moist	Border; rockery	.35	.90
<b>PYRETHRUM (Painted Daisy)</b>								
Buckeye, Double	Red	2-2½ ft.	May-June	○	Drained	Border; cutting	.45	1.20
James Kelwayi, Single	Dark blood-red	2-2½ ft.	May-June	⊙	Drained	Border; cutting	.35	.90
Miami Queen, Semi-Double	Medium pink	2-2½ ft.	May-June	⊙	Drained	Border; cutting	.45	1.20
Robinson's Dark Crimson, Sgl.	Crimson-red	2-2½ ft.	May-June	⊙	Drained	Border; cutting	.45	1.20
Trojan, Semi-Double	Dark pink	2-2½ ft.	May-June	⊙	Drained	Border; cutting	.45	1.20
Victory, Double	Pure white	2-2½ ft.	May-June	⊙	Drained	Border; cutting	.45	1.20
Hybrids, Single	Pink, Red, White	2-2½ ft.	May-June	⊙	Drained	Border; cutting	.30	.75
<b>ROSA (Alpine Rose)</b>								
Rouletti (Miniature)	Rose-pink	6-8 in.	June-Oct.	⊙	Any	Edges; rockery	.45	1.20
<b>RUDBECKIA (Coneflower)</b>								
Newmanni Hybrids	Golden shades	2-2½ ft.	All summer	⊙	Any	Border; cutting	.30	.75
<i>Purpurea</i>	Red-purple	2½-3 ft.	July-Oct.	⊙	Any	Border; cutting	.30	.75
<b>SAGINA (Pearlwort)</b>								
<i>Subulata</i> 25 plants for \$5	Tiny; white	1-2 in.	July-Sept.	⊙	Any	Flag walks	.30	.75
<b>SALVIA (Sage)</b>								
<i>Farinacea</i>	Powder-blue	2 ft.	All summer	○	Any	Border; masses	.35	.90
Pitcheri	Gentian-blue	3-4 ft.	Aug.-Sept.	○	Any	Border; masses	.35	.90
<b>SANTOLINA (Lavender Cotton)</b>								
<i>Chamæcyparissus (incana)</i>	Yellow buttons	1 ft.	June-July	○	Dry	Edges; rockery	.30	.75
<i>Viridis</i>	White	1 ft.	July	○	Dry	Edges; rockery	.35	.90
<b>SAPONARIA (Soapwort)</b>								
<i>Ocymoides splendens</i>	Rosy pink	6 in.	May-July	○	Any	Edges; rockery	.30	.75
<i>Officinalis, Double Pink</i>	Soft pink	1½ ft.	July-Oct.	○	Dry	Border; cutting	.45	1.20
<i>Officinalis, Single Pink</i>	Soft pink	1½ ft.	July-Oct.	○	Dry	Border; cutting	.30	.75
<b>SAXIFRAGA (Rockfoil)</b>								
<i>Cordifolia</i>	Rose-pink	1½ ft.	May-June	⊙	Any	Border; rockery	.40	1.00
<b>SCABIOSA (Pincushion Flower)</b>								
<i>Caucasica, Isaac House Hybrids</i>	Blue shades	1½-2 ft.	June-Sept.	○	Sandy	Border; cutting	.40	1.00
<i>Caucasica, White</i>	White	1½-2 ft.	June-Sept.	○	Sandy	Border; cutting	.40	1.00
<b>SEDUM (Stonecrop)</b>								
<i>Acre minus</i>	Bright yellow	2 in.	May	○	Dry	Carpet; rockery	.30	.75
<i>Album muralis</i>	Tiny white	3-4 in.	May-June	○	Dry	Edges; rockery	.30	.75
<i>Kamtschaticum</i>	Orange-yellow	6-8 in.	June-July	○	Dry	Edges; rockery	.30	.75
Lydiium	Rosy pink	4 in.	June	○	Dry	Edges; rockery	.30	.75
Sieboldi	Pink; small	6 in.	Aug.-Sept.	○	Dry	Edges; rockery	.30	.75
Spectabile, Brilliant	Rose-crimson	1½ ft.	Aug.-Sept.	⊙	Dry	Border	.30	.75
<b>SEMPERVIVUM (Houseleek)</b>								
<i>Arachnoideum fimbriatum</i>	Cobweb rosette	2 in.		○	Dry	Rockery; walls	.40	1.00
<i>Tectorum</i>	Light red	1 ft.	June-July	○	Sandy	Rockery; walls	.35	.90
<b>SIDALCEA (Greek Mallow)</b>								
Rosy Gem	Bright rose	2-3 ft.	June-July	○	Any	Border	.35	.90
<b>SILENE (Catchfly; Campion)</b>								
<i>Maritima</i>	White	2-3 in.	June-Aug.	○	Dry	Rockery; walls	.35	.90
<i>Schafta</i>	Bright pink	4-6 in.	July-Oct.	○	Dry	Rockery; walls	.35	.90
<b>SPIRÆA (Astilbe)</b>								
Amethyst	Violet-purple	2-2½ ft.	June-July	⊙	Moist	Border; masses	.55	1.50
Gloria Pink	Rose-pink	2-2½ ft.	June-July	⊙	Moist	Border; masses	.55	1.50
Granat	Crimson-red	2-2½ ft.	June-July	⊙	Moist	Border; masses	.55	1.50



In column headed Sun, ○ means full sun, ⊙ half shade-half sun, ● full shade		Color	Height	Time of Bloom	Sun	Soil	Uses	Each	3 for
Spiræa (Astilbe), Peach Blossom		Peach-pink	2-2½ ft.	June-July	⊙	Moist	Border; masses	\$0.55	\$1.50
White Gloria		Pure white	2-2½ ft.	June-July	⊙	Moist	Border; masses	.55	1.50
STATICE (Sea Lavender)									
Latifolia		Purple-blue	1½-2 ft.	July-Aug.	○	Sandy	Border; cutting	.35	.90
STOKESIA (Cornflower Aster)									
Blue Moon		Deep azure	1½ ft.	July-Oct.	○	Sandy	Border; cutting	.45	1.20
Cyanea, Blue		Lavender-blue	1-1½ ft.	July-Sept.	○	Sandy	Border; cutting	.35	.90
THALICTRUM (Meadow Rue)									
Adiantifolium		White	2 ft.	June	⊙	Drained	Border; cutting	.35	.90
Aquilegifolium		Rosy purple	2-3 ft.	June-July	⊙	Drained	Border; cutting	.35	.90
THYMUS (Thyme)									
Lanuginosus (Woolly-leaved)		Rosy lilac	4 in.	June-July	○	Dry	Edges; rockery	.30	.75
Serpillum, White		White carpet	3 in.	June-July	○	Dry	Edges; rockery	.30	.75
TRITOMA (Red-Hot Poker)									
Perry's Hybrids		Various	3 ft.	Aug.-Oct.	○	Any	Border; cutting	.40	1.00
TROLLIUS (Globe Flower)									
Orange Globe		Orange-yellow	1½-2 ft.	May-Aug.	⊙	Moist	Border; cutting	.45	1.20
TUNICA (Coat Flower)									
Saxifraga		Pale pink	6 in.	June-Sept.	○	Drained	Rockery; wall	.30	.75
VALERIANA (Valerian)									
Coccinea		Old-rose	2 ft.	June-Oct.	○	Limed	Rockery; wall	.35	.90
Officinalis (Garden Heliotrope)		Blush-white	3-4 ft.	June-July	○	Moist	Border; cutting	.35	.90
VERONICA (Speedwell)									
Blue Spire		Deep blue	2 ft.	June-July	○	Any	Border; cutting	.35	.90
Longifolia subsessilis		Purple-blue	2 ft.	July-Sept.	○	Any	Border; cutting	.35	.90
Royal Blue		Rich dark blue	10-15 in.	June-July	○	Any	Border; rockery	.35	.90
Rupestris		Bright blue	2-3 in.	June	⊙	Any	Carpet; rockery	.35	.90
Rupestris Rose		Mauve-pink	3-4 in.	June	⊙	Any	Carpet; rockery	.35	.90
VINCA (Trailing Myrtle)									
Minor		Clear blue	4 in.	April-May	⊙	Any	Ground-cover		.60
Minor, Bowles Variety. 25 for \$5		Deep blue	4 in.	May-June	⊙	Any	Ground-cover		.75
VIOLA (Tufted Pansies)									
Arkwright Ruby		Ruby crimson	6-8 in.	May-Oct.	○	Rich	Edges; rockery	.35	.90
Avalanche		Pure white	6-8 in.	May-Oct.	○	Rich	Edges; rockery	.35	.90
Bizarre		Purple, apricot	6-8 in.	May-Oct.	○	Rich	Edges; rockery	.35	.90
Blue Butterfly		White, mid-blue	6-8 in.	May-Oct.	○	Rich	Edges; rockery	.35	.90
Blue Perfection		Purple-blue	6-8 in.	May-Oct.	○	Rich	Edges; rockery	.35	.90
Chantreyland		Pure apricot	6-8 in.	May-Oct.	○	Rich	Edges; rockery	.35	.90
Jersey Gem		Rich violet	6-8 in.	May-Oct.	○	Rich	Edges; rockery	.30	.75
Lutea splendens		Sulphur-yellow	6-8 in.	May-Oct.	○	Rich	Edges; rockery	.35	.90
Maggie Mott		Pale blue	6-8 in.	May-Oct.	○	Rich	Edges; rockery	.35	.90
Papilio, Purple		Violet-purple	6-8 in.	May-Oct.	○	Rich	Edges; rockery	.35	.90
White Perfection		Pure white	6-8 in.	May-Oct.	○	Rich	Edges; rockery	.35	.90
YUCCA (Adam's Needle)									
Filamentosa		Creamy white	5 ft.	July-Aug.	○	Good	Border accent	.50	1.35
Filamentosa variegata		Creamy white	5 ft.	July-Aug.	○	Good	Border accent	.50	1.35



Vinca minor, Bowles



Valeriana officinalis



Trollius, Orange Globe



Statice latifolia

Yucca filamentosa



Veronica longifolia subsessilis

## Old-Fashioned Garden Herbs

	Each	3 for
Chives ( <i>Allium scaberrimum</i> .) Finely chopped leaves give a very delicious flavor to hors d'oeuvres and salads.	\$0.25	\$0.60
Lavender, True ( <i>Lavandula officinalis</i> .) The dried flowers are very commonly used for scenting linens, and in potpourris.	.35	.90
Peppermint ( <i>Mentha piperita</i> .) The leaves and tender tops of this variety may be infused for cooling drinks.	.30	.75
Rose Geranium ( <i>Pelargonium graveolens</i> .) The leaves are used for flavoring puddings and making delicious jellies.	.40	1.00
Sage ( <i>Salvia officinalis</i> .) The dried leaves of this variety are used to season meats, sausages and stuffings.	.30	.75
Savory, Summer ( <i>Sa ureia hortensis</i> .) Leaves and young shoots are used to flavor soups, stews and many vegetables.	.35	.90
Spearmint ( <i>Mentha spicata</i> .) The fresh leaves are used to flavor sauces and iced drinks, particularly mint juleps.	.30	.75
Sweet Marjoram ( <i>Origanum Majorana</i> .) The fresh leaves season sausages, vegetable dishes and salads and scent potpourris.	.30	.75
Sweet Woodruff ( <i>Asperula odorata</i> .) The hay-scented leaves are used to flavor wines. Good ground-cover for shady places.	.30	.75
Tarragon, French Our plants are from a rare and much-prized French strain. Used in salads and in making vinegar.	.40	1.00
Thyme, Common ( <i>Thymus vulgaris</i> .) Dried leaves season meat dishes, gravies and dressings; fresh leaves excellent in salads.	.30	.75



## Hardy Garden Chrysanthemums

There is nothing to excel these in satisfaction, or to bring color to the garden in the fall of the year. They like rich soil, lots of sun and water. The varieties offered below are the best in color and type, and will make a tremendous show for a small outlay. Our plants, ready in May, are in 3½-inch pots with well-developed root-systems.

You can make your own selection and take them with you, or send in your order and we will deliver, if you live within our delivery area. See inside back cover.



Chrysanthemum, September Gold



Chrysanthemum  
Early Bronze

← Chrysanthemum  
Cushion

Chrysanthemum  
Orchid Spoon



### SEPTEMBER-FLOWERING CUSHION POMPONS

- September Bronze
- September Cloud
- September Gold

### OTHER POMPONS

- Early Bronze
- Gleam O'Gold
- Goblin

### CUSHION OR AZALEAMUMS

- Champion Cushion
- Major Cushion
- New Red Cushion
- White Cushion
- Yellow Cushion

### DOUBLE VARIETIES

- Algonquin
- Avalanche
- Barbara Cumming
- Bronze Cydonia
- Burgundy
- Caliph
- Dahlia Mum
- Dean Kay
- Eugene A. Wander
- Granny Scovill
- Jean Cumming
- Jean Treadway
- King Midas
- Lavender Lady
- Milky Way
- Mrs. Pierre S. du Pont
- Pale Moon
- Roberta Copeland
- Rose Glow
- Santa Claus
- The Moor

### SINGLE VARIETIES

- Astrid
- Autumn Lights
- Louise Schling
- Peachblow
- Saladin
- Sappho
- Venus

### SPOON VARIETIES

- Golden Spoon
- Orchid Spoon

Color description	Height	In Bloom	Each	3 for
Shading from gold-bronze to warm bronze.	1½ ft.	Sept. 15	\$0.60	\$1.65
White, with primrose shading in center.	1½ ft.	Sept. 15	.60	1.65
Brilliant golden yellow. Well-rounded plants.	1½ ft.	Sept. 15	.60	1.65
Yellow bronze. Splendid for massing.	1½ ft.	Sept. 10	.30	.75
A glistening golden yellow beauty.	1½ ft.	Oct. 1	.30	.75
Frost-resistant. Glowing bronze.	2 ft.	Oct. 10	.30	.75
A myriad of rusty, red-bronze flowers.	14 in.	Sept. 10	.30	.75
Deep rose-pink, which fades very little.	12 in.	Sept. 12	.30	.75
Beautiful, striking, deep red flowers.	14 in.	Sept. 10	.30	.75
Opens delicate pink, turning pure white.	12 in.	Sept. 10	.30	.75
Covered with bright, clear yellow flowers.	12 in.	Sept. 12	.30	.75
Double yellow, full flowers, 2½ in. across.	1½ ft.	Sept. 15	.30	.75
Beautiful pure white flowers, 4 in. across.	2½ ft.	Oct. 10	.30	.75
Golden yellow, tinted bronze, 3 in. across.	1½ ft.	Sept. 15	.30	.75
Dark bronze-red flowers, 2 in. across.	2 ft.	Oct. 10	.30	.75
Glowing wine-red flowers, 2½ in. across.	2½ ft.	Oct. 5	.30	.75
Most intense brilliant red, 2½ in. across.	2½ ft.	Oct. 5	.30	.75
Large flowers, dark wine-red. Cushion type.	15 in.	Sept. 20	.40	1.00
Rose-pink semi-double flowers, 2 in. across.	2 ft.	Sept. 1	.30	.75
Bronze tinted golden yellow, 4 in. across.	1½ ft.	Sept. 20	.50	1.35
Warm coral-bronze flowers, 4½ in. across.	2 ft.	Oct. 10	.30	.75
Very double, pure white, 3 in. across.	1½ ft.	Sept. 15	.30	.75
Soft pink with rose center, 3 in. across.	1½ ft.	Sept. 25	.30	.75
Bronze tinted soft yellow, 4 in. across.	2½ ft.	Sept. 25	.30	.75
Beautiful pure lavender, 3 in. across.	2 ft.	Oct. 5	.40	1.00
Cream-white, semi-double, 3 in. across.	2 ft.	Sept. 25	.40	1.00
Apricot-yellow, suffused bronze, 3½ in. across.	2 ft.	Oct. 1	.50	1.35
Soft, cream-yellow flowers, 2½ in. across.	2½ ft.	Oct. 5	.30	.75
Soft rose-red, semi-double, 2½ in. across.	1½ ft.	Sept. 15	.30	.75
Raspberry-rose-pink, near double, 1½ in. across.	2 ft.	Sept. 25	.30	.75
Red, gold-centered, half double, 2½ in. across.	2 ft.	Oct. 5	.30	.75
Wine-red, full double flowers, 3 in. across.	2 ft.	Oct. 1	.30	.75
Lovely shade of shell-pink, tinted old-rose.	2 ft.	Sept. 15	.30	.75
Brilliant coppery red, tinted bronze.	1½ ft.	Oct. 1	.30	.75
Beautiful salmon-red, toned bronze.	2½ ft.	Oct. 1	.30	.75
A blend of salmon-pink, fawn and bronze.	2½ ft.	Sept. 25	.60	1.65
Rich oriental red and coral-bronze.	2½ ft.	Oct. 5	.30	.75
Showy, bright butter-yellow blooms.	2 ft.	Oct. 5	.30	.75
A beautiful shade of orchid-pink.	2½ ft.	Sept. 20	.30	.75
Glistening golden yellow, semi-double.	1½ ft.	Oct. 5	.30	.75
Very light pinkish lilac; large flower.	2 ft.	Oct. 5	.30	.75

### See Our Hardy Chrysanthemums in Full Bloom Next Fall!

Here is a wonderful opportunity to see all of the above varieties in full bloom at our Hanover Display Garden next fall. The approximate flowering dates are shown above. All plants then on display in our beds will be for sale, in 6-inch pots. They may be moved to your garden while in bloom without suffering any set-back, and continue to provide enjoyment even after frost.

Whether you buy or not, come in and enjoy seeing them.



# Finding List for Daffodils, Tulips and Iris at Our Display Garden

All varieties on display are numbered. Reference to the list below will give you the variety names. Check your favorites. Because of unsettled conditions we cannot set bulb prices until later. We will gladly enter your order now for bulbs for fall delivery, subject to your acceptance of price by July 15th.

## Giant Trumpet Daffodils

- 301 Aerolite
- 302 Emperor
- 303 Glory of Sassenheim
- 304 Golden Spur
- 305 King Alfred
- 306 Minister Talma
- 307 Olympia
- 308 Robert Sydenham
- 309 Spring Glory
- 310 The First
- 311 Tresserve
- 313 Van Waveren's Giant
- 314 Victoria

## Barrii Narcissus

- 315 Bath's Flame
- 316 Conspicuous
- 317 Diana Kasner
- 318 Firetail
- 319 Lady Diana Manners
- 320 Lady Moore
- 321 Mrs. Barclay
- 322 Red Beacon

## Incomparabilis Narcissus

- 323 Bernardino
- 324 Croesus
- 325 Helios
- 327 Lucifer
- 328 Lucinius
- 329 Red Cross
- 330 Sir Watkin
- 331 Will Scarlet

## Leedsii Narcissus

- 333 Mrs. Langtry
- 334 Queen of the North

## Poetaz Narcissus

- 335 Abundance
- 337 Cheerfulness
- 338 Laurens Koster

## Poeticus Narcissus

- 339 Glory of Lisse
- 340 Horace
- 342 Pheasant's Eye

## Double Daffodils

- 343 Alba Plena Odorata
- 345 Twink

## Jonquil

- 348 Golden Sceptre

## Triumph Tulips

- 107 Aviateur
- 108 Essen
- 109 Johanna
- 110 Kansas
- 112 Mr. Zimmerman
- 113 Telescopium
- 114 Tosca
- 115 Ursa Minor

## Darwin Tulips

- 116 Afterglow
- 117 Allard Pierson
- 118 Anton Mauve
- 119 Anton Roozen
- 120 Baronne de la Tonnaye
- 121 Bartigon
- 123 Bleu Aimable
- 124 Bona Est.
- 126 Centenaire
- 127 City of Haarlem
- 128 Clara Butt
- 130 Dream
- 132 Edmee
- 133 Farncombe Sanders
- 134 Faust
- 135 Feu Brillant
- 136 Frans Hals
- 137 Giant
- 141 Herodiade
- 143 Jubilee
- 145 King George V.
- 146 King Harold
- 147 La Candeur
- 149 La Fiancee
- 152 La Tristesse
- 153 La Tulipe Noire
- 155 Madame Krelage
- 158 Matchless
- 161 Mrs. Mandel
- 163 Peking
- 165 Philippe de Comines
- 166 Pride of Haarlem
- 167 Prince of the Netherlands
- 168 Princess Elizabeth
- 170 Professor Rauwenhof
- 172 Reverend H. Ewbank
- 174 Santa Rosa
- 177 Sundew
- 178 The Sultan
- 180 Valentin
- 181 Venus
- 182 Victoire d'Oliviera
- 183 Whistler
- 185 William Copland
- 186 William Pitt
- 187 Yellow Giant
- 188 Zwanenburg

## Breeder Tulips

- 189 Apricot
- 190 Bronze Queen
- 192 Copernicus
- 193 Coridion
- 194 Dillenburg
- 195 Dom Pedro
- 197 Jaune d'Oeuf
- 198 Louis XIV
- 201 Prince of Orange
- 204 Yellow Perfection

## Cottage Tulips

- 208 Argo
- 209 Bouton d'Or
- 212 Eclatant
- 213 Ellen Willmott
- 215 Gesneriana Lutea
- 216 Gesneriana Spathulata
- 220 Inglescombe Yellow
- 222 Jeanne Desor
- 223 John Ruskin
- 224 Leda
- 225 Marjorie Bowen
- 226 Mrs. Moon
- 227 Rosabella
- 228 Sirene
- 229 Wall Street

## Bearded Iris

- 401 Allure
- 402 Alta California
- 403 Ambera
- 404 Ammon
- 405 Asia
- 406 Beau Sabreur
- 407 Beltane
- 408 Black Wings
- 409 Blue Chintz
- 410 Blue Monarch
- 411 Blue Velvet
- 412 Bruno
- 413 California Gold
- 414 Cinnabar
- 415 Clara Noyes
- 417 Crystal Beauty
- 418 Cupavo
- 419 Dariel
- 420 Dauntless
- 421 Depute Nomblot
- 422 Desert Gold
- 423 Don Juan
- 424 Edgewood
- 425 Fascination
- 426 Frieda Mohr
- 427 Giant Baldwin
- 428 G. P. Baker
- 429 Guyasuta
- 430 Happy Days

## Bearded Iris, continued

- 431 Huguette
- 432 Hypatia
- 434 Julia Marlowe
- 435 Lady Phyllis
- 436 Legend
- 438 Lord Lambourne
- 439 Los Angeles
- 440 Madeleine Brun
- 441 M. A. Porter
- 442 Marie Poole
- 444 Mary Gibson
- 445 Meldoric
- 447 Modoc
- 448 Morning Splendour
- 449 Mount Royal
- 450 Mourning Dove
- 451 My Maryland
- 452 Ningall
- 453 Orient Pearl
- 455 Persia
- 457 Pink Satin
- 458 Pluie d'Or
- 459 Queen Anne
- 460 Rameses
- 461 Refulgence
- 462 Rheingaupele
- 463 Rob Roy
- 464 Romance
- 465 Romola
- 466 Ronda
- 467 Rose Ash
- 468 Sacramento
- 469 San Francisco
- 470 Santa Clara
- 471 Shah Jehan
- 473 Simonne Vaissiere
- 474 Sitka
- 475 Sunlight
- 476 Tapestry
- 477 Thais
- 478 The Black Douglas
- 479 Tiger-Tiger
- 480 Valor

## Iris Kaempferi

- 501 Aoigata
- 502 Aida
- 503 Amphitrite
- 504 Apollo
- 505 Asa Gray
- 506 Aspasia
- 507 Astarte
- 508 Bangkok
- 509 Banri-No-Hibiki
- 510 Bashu-No-Ten
- 511 Betty Jean Childs
- 512 Blue Giant
- 513 Bokhara
- 514 Bride

## Iris Kaempferi, continued

- 515 Caprice
- 516 Carlton Childs
- 517 Caroline G. Childs
- 518 Choseiden
- 519 Chutsai
- 520 Circe
- 521 Clarice Childs
- 522 Cœrulea
- 523 Confucius
- 524 Delight
- 525 Della
- 526 Doris Childs
- 528 Eleanor Parry
- 529 Ella Curtis
- 530 Ephigenie
- 531 Ethel J. Marshall
- 532 Eumee
- 533 Fanny Hamlet Childs
- 534 Fascination
- 536 Grace Sperling
- 537 Hebe
- 539 Hercule
- 540 Ispahan
- 541 Jeannette Parry
- 542 John Francis
- 543 Josephine Heywood
- 544 Kamata
- 545 Kha Khan
- 546 Kobe
- 547 Koki-No-Iro
- 548 Kuro Kumo
- 549 La Favorite
- 551 Lilla Cox
- 552 Lucy Marshall
- 553 Marjory Parry
- 554 Melpomene
- 556 Nama Komachi
- 557 Neptune
- 558 Oriole
- 559 Othello
- 560 Patrocle
- 561 Pluton
- 562 Priam
- 563 Pyramid
- 564 Red Riding Hood
- 565 Reine Helene
- 566 Repsime
- 567 Rose Anna
- 568 Royal Robe
- 569 Salambo
- 570 Sam's Watashi
- 571 Shinso Kaijin
- 574 Suibijin
- 575 Temple Flower
- 576 Totty's True Blue
- 577 Violet Herrington
- 578 White Giant
- 579 Yama Yama
- 580 Yomo-No-Umi



# Hardy Lilies

We show below the height, season of bloom, planting depth and size of bulbs.

These hardy, thrifty flowers like partial shade and appear best when planted in groups against a background of shrubbery. They thrive in well-drained borders and bloom in midsummer when fine flowers are scarce.

**Auratum** (Gold-banded Lily). Fragrant white flowers dotted dark brown and maroon, centered yellow. Not available.  
**Regale** (The Royal Lily). Funnel-shaped white blooms, shaded pink and streaked brown on the outside; flushed yellow inside. 5 to 7 ft. July. (8 in.) 7-in. bulbs, 20 cts. each; \$2 per doz.

**Speciosum rubrum or magnificum**. Carmine on a white ground with crimson spots. These, called Oriental Orchids, rival the *Lili m a rat im*. Not available.  
**Tenuifolium** (Coral Lily). Thread-like leaves and clusters of bell-like, recurved, coral-red flowers. 3 to 4 ft. June. (6 in.) 15 cts. each; \$1.50 per doz.

# Peonies

As individual clumps or in borders in front of shrubbery they are magnificent in flower and handsome in foliage throughout the season. They last a week or more when cut. Plant them not too deeply—2 inches of earth over the buds is sufficient. We offer 2-year-old clumps with 3 to 5 eyes, in three colors—Double White, Double Pink, and also Double Red, at 35 cts. each; \$3.50 per doz.

# Flat-Grown Annual Flower Plants

For those who prefer using plants, we offer well-rooted, sturdy plants of known high quality, grown from Forbes Seeds under our own supervision, ready about May 1. There are approximately 50 plants in a flat of Ageratum, Dahlias, Fringed Petunias, Salvia, about 60 Morning-Glories, and Bedding Petunias and about 70 in each flat of the other kinds.

	Doz.	Flat		Doz.	Flat
Ageratum, Dwarf Blue	\$0 35	\$1 10	Petunia, Rosy Morn	\$0 30	\$1 10
Alyssum, Carpet of Snow	30	1 10	Petunia, Salmon Supreme	30	1 10
Alyssum, Violet Queen	30	1 10	Petunia, Snow Queen	30	1 10
Aster, Gt. Calif. Sunshine	30	1 10	Petunia, Violaacea	30	1 10
Aster, Wilt-Res. Branch., Mxd.	30	1 10	Petunia, Dwarf Bedding, Mxd.	30	1 10
Calendula, Double Mixed	30	1 10	Petunia, Dwarf Elk's Pride	45	1 25
Carnation, Chabaud Gt. Mxd.	30	1 10	Petunia, Dwarf Pink Glory	45	1 25
Centaurea cyanus, Dbl. Mxd.	30	1 10	Petunia, Snowstorm	45	1 25
Centaurea, Imperialis, Mixed	30	1 10	Petunia, Dwf. Gts. Calif., Mxd.	45	1 25
Chrysanthemum, Sgl. Tricolor	30	1 10	Petunia, Frg'd Golden Jubilee	45	1 25
Cosmos, Early-flowering, Mxd.	30	1 10	Petunia, Fringed Rapture	45	1 25
Cosmos, Orange Flare	30	1 10	Petunia, Frg'd Romany Lass	45	1 25
Cosmos, Sensation Mixed	30	1 10	Petunia, Ruffled Gt., Camilla	45	1 25
Dahlia, Unwin Dwf. Hyb., Mxd	45	1 50	Petunia, Ruffled Gt. Marilyn	45	1 25
Gaillardia Lorenz. Dbl. Mxd.	30	1 10	Petunia, Ruffled Giants, Mxd.	45	1 25
Larkspur, Dbl. Stock-fld. Mxd.	30	1 10	Petunia, Double Blue Brocade	65	2 00
Lobelia, Dwarf Deep Blue	30	1 10	Petunia, Double Brilliancy	65	2 00
Marigold, Pot o'Gold	30	1 10	Petunia, Double Fringed, Mxd.	65	2 00
Marigold, Dwf. Dbl., Harmony	30	1 10	Phlox, Dr., Art Shades, Mixed	30	1 10
Marigold, Dwarf French, Mxd.	30	1 10	Portulaca, Double, Mixed	30	1 10
Marigold, Guinea Gold	30	1 10	Salpiglossis, Mixed	30	1 10
Marigold, Tall African, Mixed	30	1 10	Salvia splendens (Scarlet Sage)	45	1 50
Marigold, Sunset Giants Mxd.	30	1 10	Scabiosa, Giant-flowered Mxd.	30	1 10
Marigold, Yellow Supreme	30	1 10	Snapdragon, Super-Giant, Mxd.	30	1 10
Morning-Glory, Heavenly Blue	40	1 50	Snapdragon, Tom Thumb Mxd.	30	1 10
Petunia, Balcony Mixed	30	1 10	Stocks, Dwarf Ten Weeks, Mxd.	30	1 10
Petunia, Celestial Rose	30	1 10	Tagetes, Little Orange Giant	30	1 10
Petunia, Cream Star	30	1 10	Torenia, Fournieri	40	1 25
Petunia, Glow	30	1 10	Verbena, Gt. Hybrids, Mxd.	30	1 10
Petunia, Howards Star	30	1 10	Zinnia, Dahlia-flowered, Mxd.	30	1 10
Petunia, Little Blue Star	30	1 10	Zinnia, Lilliput, Mixed	30	1 10

# Flat-Grown Vegetable Plants

These are flat-grown Vegetable plants, the Tomatoes ready about May 1, the Eggplants and Peppers about May 15, and the others about April 15. There are approximately 60 plants in a flat of Eggplants, 90 in a flat of Celery and Tomatoes, and 80 in each flat of the other kinds.

	Doz.	Flat		Doz.	Flat
Cabbage, Copenhagen Market	\$0 25	\$1 10	Lettuce, New York	\$0 25	\$1 10
Celery, or Knob Celery	25	1 10	Parsley, Double Curled	25	1 10
Celery, Golden Plume	25	1 10	Pepper, in variety	25	1 10
Eggplant, Black Beauty	30	1 10	Tomato, in variety	25	1 10

# Insecticides

Prices subject to change without notice

**Ant Killer**. Effective against ants and insects that infest lawns. Sprinkle on board and place near ants. 4 ozs. 40 cts.

**Ant-Trap, "TAT."** Safe for children and pets. Place traps 15 feet apart where ants are numerous. Exterminates colony in 3 to 14 days. 25 cts. each; \$2.75 per doz.

**ARSENATE OF LEAD**. Kills Japanese Beetle grubs in the soil. On new lawns apply 35 lbs. per 1000 sq. ft. and work to a 3-inch depth. On existing lawns, apply 5 lbs. per 1000 sq. ft. for light infestation and 15 lbs. per 1000 sq. ft. for bad infestation. Mix with 25 times its bulk of soil and spread evenly. Apply before June or July. Avoid applying to soil of flower, shrub, and vegetable beds.

For spraying trees and shrubs against attacks of leaf-biting insects. Use 1 lb. to 50 gals. of water. In powdered form it is easy to handle. Lb. 40 cts.; 4 lbs. \$1; 24 lbs. \$5; 48 lbs. \$9; 96 lbs. \$17.50.

**BLACK LEAF 40**. An insecticide for sucking insects such as plant lice, aphid, red spider, leaf hopper, thrip, etc. Dilute 2 teaspoonfuls to 1 gal. of water, and spray. 1-oz. bottle 35 cts.; 5 ozs. \$1; lb. \$2.50; 2 lbs. \$3.70; 5 lbs. \$6.90.

**BORDEAUX MIXTURE**. A fungicide for mildew, blight, rust, scab, and all fungous diseases. Has just double the strength of paste form. Use 1 lb. to 8 gals. of water, or if blight is serious, to 5 gals. Lb. 40 cts.; 4 lbs. \$1; 24 lbs. \$5; 48 lbs. \$9; 96 lbs. \$17.50.

**Bordo-Arsenate of Lead Powder**. Prevents disease and kills insects. Easier to use than Pyrox. Lb. 45 cts.; 4 lbs. \$1.25; 24 lbs. \$6.50; 48 lbs. \$12; 96 lbs. \$23.50.

**Cyanogas (A) Dust**. For outside use in killing rats, moles, and squirrels, also white grubs in lawns. 1/2 lb. 45 cts.

**EVER-GREEN** Effective against cutworms, cucumber beetles, cabbage worms, rose slugs, aphid, thrip, etc. Will not injure tender plants or roses. Kills gladiolus thrip. It is a non-poisonous material. Oz. 35 cts.; 6 ozs. \$1; 16 ozs. \$2.

**Fish-Oil Soap (Whale-Oil Soap)**. A summer spray for San José scale and all soft-shelled insects. Lb. 35 cts.; 5 lbs. \$1.25.

**JAPANESE BEETLE DUST AND SPRAY**. Both kills and repels and is very effective. Harmless to humans and animals. Lb. (makes 20 gals. of spray) 95 cts.; 5 lbs. \$3.50; Beetle Traps 60 cts. and \$1.20.

**LIME-SULPHUR, DRY**. Convenient to handle, will not freeze. For dormant spray use 10 to 14 lbs.; for summer spray 2 to 3 lbs., to 50 gals. of water. Lb. 40 cts.; 5 lbs. \$1.50; 25 lbs. \$5; 100 lbs. \$17.

**Nico-Fume Powder Pressure Fumigator**. Destroys aphid in greenhouses. Lb. 75 cts.

**Para Dichlorobenzene**. Best for peach-borer. Covered with soil surrounding the tree, it emits a heavy gas which descends throughout the root growth and destroys the pests. Lb. 60 cts.; 5 lbs. \$2.50.

**Pomo-green, with Nicotine**. A fine all-purpose dust or spray which is very effective against both chewing and sucking insects. Besides this, it is the best control of mildew, black-spot, and other fungous diseases affecting roses. Lb. 75 cts.; 5 lbs. \$3.



Effective, non-poisonous. Will not stain or injure tender flowers. A contact spray that kills sucking and chewing insects. Oz. 35 cts.; 4 ozs. \$1; pt. \$2.85; qt. \$5.

**ROTENONE DUST**. A non-poisonous dust containing 3/4 per cent rotenone. Very effective against bean beetles and other chewing and sucking insects. Lb. 35 cts.; 5 lbs. \$1.25; 25 lbs. \$4.50.

**Scalecide**. For San José scale. Non-poisonous preparation. Mix 1 gal. to 20 gals. of cold water. Use in late fall, winter, or early spring, when foliage is off. Qt. 75 cts.; gal. \$1.75; 5 gals. \$6.35; 10 gals. \$10.90.

**Semesan**. Disinfectant for vegetable and flower seeds. Successful for the malignant disease called "Brown Patch," on lawns. 2 ozs. 40 cts.; lb. \$2.50.

**Slug-Shot**. A non-poisonous powder, applied by dusting on the plants. Non-injurious. Effective remedy for potato bugs, beetles, slugs, cabbage worms, etc. Lb. 30 cts.; 5 lbs. \$1.10.

**Sulphur, Powdered**. Controls mildew. Lb. 15c.; 5 lbs. 45c.; 10 lbs. 80c.; 100 lbs. \$7.

**Tobacco Dust (Fine)**. For fumigating, dusting and against ground insects around tree roots. Lb. 15 cts.; 5 lbs. 50 cts.; 25 lbs. \$1.40; 50 lbs. \$2.50; 100-lb. bag \$4.

**Tree Band Paste**. Sticky compound which protects tree from attacks of creeping insects. One application will remain soft three months in all weathers. One lb. makes 10 lineal feet of band. Lb. 65 cts.; 5 lbs. \$3.

**Wilson's O. K. Plant Spray**. An excellent general contact spray for garden or greenhouse. Dilute 1 qt. to 10 gals. water. 1/2 pt. 40 cts.; qt. \$1; gal. \$3; 5 gals. \$12.

**Dogzoff**. A repellent for dogs, cats, and rabbits. Spray the ground around shrubs and evergreens, as the odor rises. Don't spray foliage. Bottle 60 cts.

**HERBICIDE WEED KILLER**. Kills vegetation of all kinds, and is the best thing you can use to kill grass in clay tennis courts, driveways, gutters, etc. Dilute with water, 1 gal. making 40 gals. of liquid, which will cover from 500 to 1000 sq. ft. of ground. Qt. 70 cts.; gal. \$1.90; 5 gals. \$7.50; 10 gals. \$12.50; 55-gal. drum \$44.

Full directions for use are shown on every package

Ladies' medium, Ladies' large, Men's medium Garden Gloves, Eezwear. All leather, soft and pliable. Washable. 3 sizes. 75 cts. per pair, 2 for \$1.40.



# Forbes Fertilizers and Soil-Builders

*These prices are subject to change without notice*

The success of your garden depends upon the quality of the soil. All plants need ample plant-food. By ample is meant not only the quantity but also the availability. The soil must hold plant-food and moisture, yet be in such condition that the plant roots can absorb what is needed. It should be sufficiently rich in humus or decayed vegetation to absorb excess moisture and hold it for later use. It should have enough clay to give it some body and enough sand to make it porous and friable. But even with a perfect soil, plant-food must be added each year to replace that which is consumed.

**Acid Super-Phosphate.** (16 per cent available Phosphoric Acid.) Apply 1000 lbs. to an acre or 20 lbs. per 1000 sq. ft. as a top-dressing for lawns, and drench thoroughly with water. Avoid use in hot weather. 100 lbs. \$2.25; 500 lbs. \$10.

**Adco.** For making artificial manure by stacking straw, leaves and other vegetable waste, layer by layer, mixing it with Adco, and keeping it wet until well rotted. A 25-lb. bag with 12 wheelbarrow loads of garden waste, makes  $\frac{1}{2}$  ton of manure.  $7\frac{1}{2}$  lbs. 95 cts.; 25-lb. bag \$2.25; 150-lb. bag \$10.50.

**Aluminum Sulphate.** Use to acidify the soil in rhododendron beds and other sour-soil plants. Use a liberal sprinkling by hand several times a year. 5 lbs. 40 cts.; 10 lbs. 65 cts.; 25 lbs. \$1.25; 100 lbs. \$4.

**Bone-Meal.** Because of its slow disintegrating and long-lasting qualities, this is desirable for fertilizing all hard-wooded plants, including roses, flowering shrubs, fruit bushes, and trees. A liberal application mixed into the soil before planting bulbs of tulips, hyacinths, etc., will result in remarkable size and brilliancy of flowers. For lawns it is a dependable fertilizer, as it contains the essentials that grass requires. May be broadcast as a top-dressing either in early spring or during the growing season with beneficial results. For this use 25 lbs. for every 1000 sq. ft. For trees and vines, use 2 to 4 lbs. each. For roses and pot-plants, use 1 part to about 50 parts of soil. For field and garden crops or making new lawns, use 50 lbs. for every 1000 sq. ft. 5 lbs. 40 cts.; 10 lbs. 70c.; 25 lbs. \$1.50; 50 lbs. \$2.50; 100 lbs. \$4.50; 500 lbs. \$21; ton \$78.

**Bovung.** A dehydrated, pulverized cow-manure product free from weed seeds. Clean, odorless, easily applied. Apply 50 lbs. to 200 sq. ft. of new lawn, half that much to top-dress old lawns. 50 lbs. \$1.65; 100 lbs. \$3; 500 lbs. \$14.50.

**Cow-Manure.** In dry pulverized form and easy to handle. This is an ideal soil-builder and mulch, particularly for perennial beds. It is fine for lawn, garden and greenhouse and excellent to mix with compost. When used for top-dressing it works down into the soil leaving no waste to be raked off later. 50 lbs. \$2; 100 lbs. \$3.50; 500 lbs. \$16; ton \$60.

**Driconure.** This is the improved product, containing about  $\frac{3}{4}$  cow and poultry manures in dehydrated form, and  $\frac{1}{4}$  peat moss, finely ground and easy to apply. This complete all-organic fertilizer and soil-conditioner is free from weed seeds, insect infestation and trash of any kind. The peat moss prevents burning as it holds the plant-food and moisture until they are used up by the plant roots. Driconure is ideal for top-dressing lawn or garden. 50 lbs. \$1.75; 100 lbs. \$3.25; 500 lbs. \$16; 1000 lbs. \$31; ton \$60.

**Fertilizer Distributor.** A handy device for small lawns; spreads fertilizer, grass seed, soil, etc. Has revolving agitator, adjustment and shut-off device. 16 in., \$3.35; 20 in., \$6.75.

**Hyper-Humus.** This ideal soil-builder for lawn or garden is a pure organic material similar to leaf-mold but of finer texture and is non-acid. Humus gives to soil that porous, crumbly condition essential to plant-growth; renders clay soils lighter in character and more aerated; binds together sandy soils; and increases the moisture-retaining quality of all soils. It is odorless, dry, and easily handled, and absolutely free from weed seeds. Fine for mixing with potting-soil. On new lawns, apply 100 pounds per 60 square feet. In top-dressing old lawns, use 100 pounds per 100 square feet. In bags, 50 lbs. \$1; 100 lbs. \$1.60; 500 lbs. \$6.40; 1000 lbs. \$12; ton \$20. Special price on bulk delivered.

**Lime, Hydrated Agricultural.** Corrects acid conditions of the soil, binds loose soils and opens heavy land. It is very quick-acting but will not burn if scattered evenly when lawn is dormant. As an early spring or late fall dressing for lawns, broadcast 50 lbs. per 1000 sq. ft. 10 lbs. 35 cts.; 50 lbs. 65 cts.; 100 lbs. \$1.25; 500 lbs. \$6; ton \$21. Broadcast 1 ton to the acre.

**Nitrate of Soda.** A quick plant-stimulant. Forces a heavy, succulent growth in lettuce and similar leaf vegetables. Use it with great care; not more than 1 lb. to 100 sq. ft., raked in. For lawns, use 5 lbs. per 1000 sq. ft., but first mix with four times its bulk of fine soil or sand. As a liquid use 1 oz. in 1 gal. of water. 5 lbs. 50 cts.; 10 lbs. 90 cts.; 25 lbs. \$1.75; 50 lbs. \$3; 100 lbs. \$5; 500 lbs. \$22.50.

## Forbes Super Lawn and Garden.

(Analysis 5-10-5.) This is the best for lawns, vegetables, flowers, fruit, or for general garden use. It is a well-balanced, complete fertilizer containing all the food elements needed for quick growth, early maturity, and perfect development. Top-dress your lawn twice each year, once before the new spring growth commences and again in the fall before active growth stops. On a new lawn, broadcast 25 pounds for every 500 square feet. For top-dressing, apply evenly 25 pounds for every 1000 square feet. In hot weather, use half this quantity and water in thoroughly with a hose. For gardens, mix a little thoroughly through the soil in the bottom of the furrow before planting your seeds. Hoe it into the soil between the rows of plants, using about 5 pounds to 100 feet, and repeat this each month. Work a handful into the soil around dahlias. Scatter some around your shrubs and trees and rake in. 5 lbs. 40 cts.; 10 lbs. 65 cts.; 25 lbs. \$1.25; 50 lbs. \$2; 100 lbs. \$3.50; 500 lbs. \$16; ton \$60.

**Sheep-Manure.** Much superior to the Sheep and Goat Manure.

Has all the essential plant-food elements of stable manure without the bulk, weed seeds, and waste matter. It is assimilated rapidly by all forms of plant-life. Scatter broadcast 100 lbs. per 1000 sq. ft. over the old lawn or rake thoroughly into the top-soil a day or two before seeding a new one. For liquid manure, use one pound to five gallons of water. 5 lbs. 40 cts.; 10 lbs. 65 cts.; 25 lbs. \$1.25; 50 lbs. \$2; 100 lbs. \$3.50; 500 lbs. \$16; ton \$60.

**Sulphate of Ammonia.** Fast plant-stimulant tending to make soil acid. Increases leaf-growth. When top-dressing lawns apply 1 lb. to every 150 sq. ft., but first mix with several times its bulk of soil or sand. Between vegetable rows scatter 3 lbs. to 100 feet and hoe in. As a liquid dissolve 1 oz. in a gal. of water and apply to the roots, avoiding the plants. 5 lbs. 50 cts.; 10 lbs. 90 cts.; 25 lbs. \$1.75; 100 lbs. \$5.

**Vigoro.** Top-dress 40 lbs. per 1000 sq. ft. of lawn. 5 lbs. 45 cts.; 10 lbs. 85 cts.; 25 lbs. \$1.50; 50 lbs. \$2.50; 100 lbs. \$4; 500 lbs. \$19.

**Wood Ashes.** These contain potash and lime. For top-dressing lawns, destroying insects and weeds, particularly moss; use 100 lbs. to 1500 sq. ft. Also good for fruit. 25 lbs. \$1; 50 lbs. \$1.75; 100-lb. bag \$3; bbl. (about 200 lbs.) \$5; ton \$45.

## House-Plant Food

**Plantabbs.** A concentrated fertilizer. Easy to use; clean and odorless, inexpensive and works like magic. 30 tablets 25 cts.; 75 tablets 50 cts.; 200 tablets \$1; 1000 tablets \$3.50.

## Vitamin B<sub>1</sub>

Induces greater growth, larger blooms, stronger roots. Apply while sprinkling. Liquid form, 25-ct. size makes 100 gals.; \$1 size makes 800 gals.

## Granulated Peat Moss

It is a well-known garden fact that mechanical soil-condition contributes largely to the success of any garden. Granulated Peat Moss, incorporated liberally into the soil, prevents baking and crusting, improves aeration, contributes to the formation of humus, lightens and makes the soil more friable, acts as a reservoir for soil-moisture and concentrated plant-fertilizers, and assures maximum root-development.

By mixing Granulated Peat Moss liberally into the soil at the time of planting, you will be assured of more luxuriant growth of flowers, lawns, and shrubbery during the growing season. For mulching purposes, it is used extensively both for summer moisture-retention and winter-protection, about roses, evergreens, perennial beds, and shrubbery.

Trial size \$1 (about 2 bus.) enough to cover 30 sq. ft. 1 inch deep.  
Large bale \$4.50 (about 20 bus.) will cover 300 sq. ft. 1 inch deep.

## FREE DELIVERY

We deliver FREE, by our own trucks, within the suburban area of Newark, N. J. (viz. all of Essex and Union counties; Clifton, Little Falls, Passaic and Paterson in Passaic County; and Chatham, Florham Park, Hanover, Madison and Morristown in Morris County) all merchandise offered in this Catalog.

We ship, transportation FREE within 100 miles of Newark, N. J. (and outside the above suburban area), all merchandise offered herein except Plants, but at our option by Parcel Post or Express to your address or nearest Post or Express Office, or by Freight to your nearest Station.

We ship, transportation FREE to any point in the United States, at the prices in this Catalog, all Lawn Grass Seed Mixtures offered herein.

PRINTED  
IN  
U.S.A.



*for*

1

9

4

2

Be Sure to See the Daffodils in Bloom at Our  
Display Garden on Route 10, Hanover, N. J.

We invite you to bring your friends to see our Daffodil  
Display in April. You'll find forty different varieties in all their  
glory. Choose your favorites and, if you wish, we will arrange  
to supply the bulbs at planting-time next fall.

*Forbes Seeds*

U.S. DEPT. OF AGRICULTURE  
BUREAU OF PLANT INDUSTRY  
908 B. ST. S.W.  
WASHINGTON, D.C.

Sec. 562, P. L. & R.  
U. S. POSTAGE  
PAID  
Harrisburg, Pa.  
Permit No. 90